



**CSU**

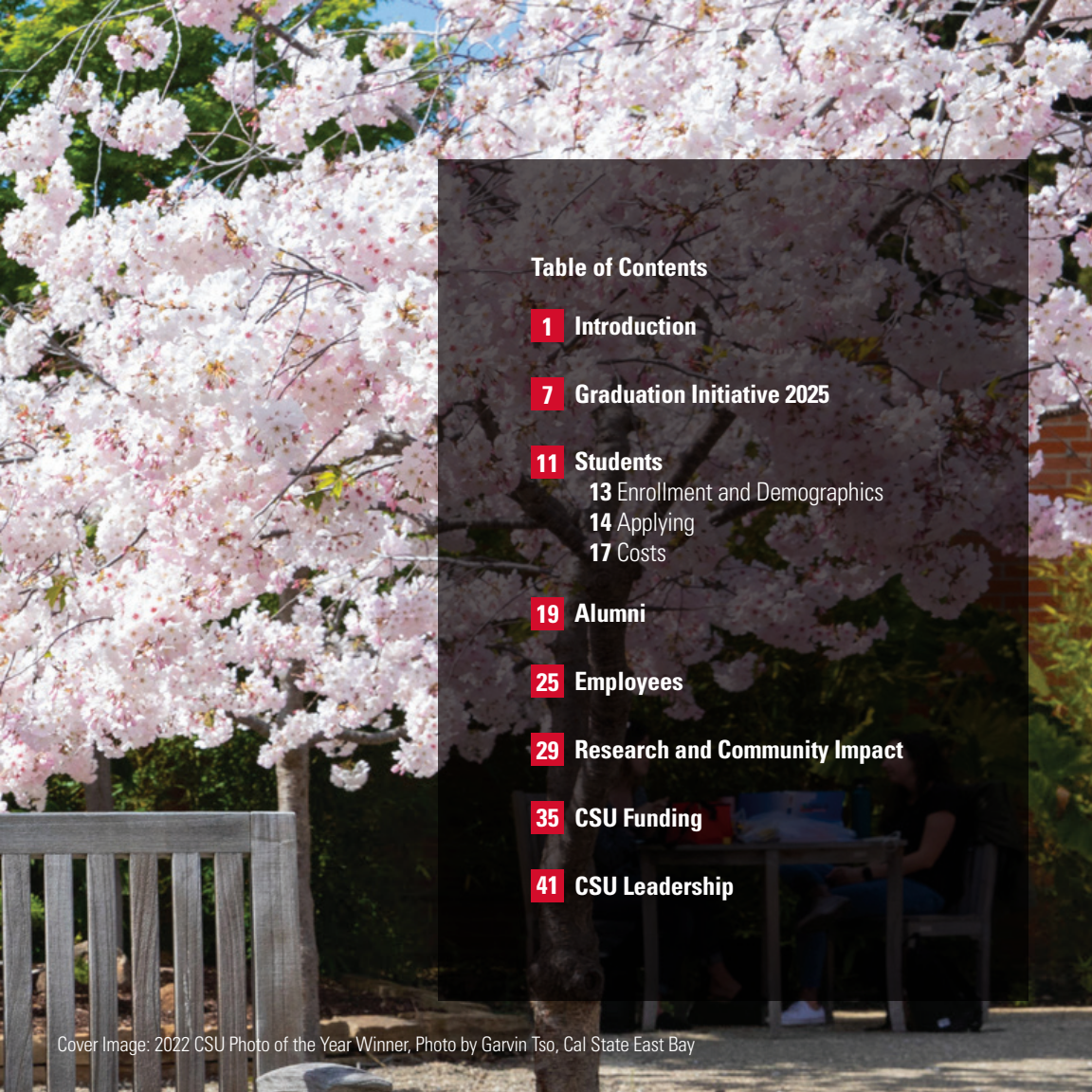
The California  
State University



**FACTBOOK**

**2023**





## Table of Contents

- 1** Introduction
- 7** Graduation Initiative 2025
- 11** Students
  - 13 Enrollment and Demographics
  - 14 Applying
  - 17 Costs
- 19** Alumni
- 25** Employees
- 29** Research and Community Impact
- 35** CSU Funding
- 41** CSU Leadership

**CSU** The California State University

“Since its inception, the California State University has been a national model for inclusive excellence in higher education. By transforming the lives of its students, elevating families and communities and preparing the dynamically diverse educated workforce of today and tomorrow, the CSU is driving California’s brightest future.”

Jolene Koester  
Interim Chancellor, California State University



2022 CSU Photo of the Year Runner-Up, Photo by Sean DuFrene, Cal State Long Beach

# INTRODUCTION

The California State University is the nation's largest and most diverse four-year public university, providing opportunities for upward mobility to students across the state and empowering them to become leaders in the changing workforce.



**NATION'S  
LARGEST**  
four-year public  
university system



**23**  
**UNIVERSITIES**  
and seven  
off-campus centers



**NEARLY**  
**460,000**  
students



## THE CSU

- educates the most ethnically, economically and academically diverse students in the nation.
- is consistently recognized for the quality of its teaching and preparing job-ready graduates.
- provides the most affordable higher education in the nation.
- enrolls nearly 460,000 students.
- employs more than 56,000 faculty and staff.
- serves each of California's regions from Humboldt to San Diego.
- offers 4,100 degree programs that align with workforce demands.
- has conferred degrees on more than 4 million alumni.



Awards  
**NEARLY HALF**  
of the state's  
bachelor's degrees



Confers nearly  
**130,000**  
degrees  
annually



Returns nearly  
**\$7 FOR EVERY \$1**  
invested by CA



Stretches  
**800 MILES**  
from Humboldt  
to San Diego



Helps create  
**209,400**  
jobs annually



Generates  
**\$26.9 BILLION**  
in industry activity

## THE VALUE OF A CSU DEGREE

The California State University offers a life-changing education for one of the most affordable tuitions in the country. Students learn from world-class faculty, gain valuable hands-on experiences and receive strong career advising to ensure they graduate job-ready.

The CSU plays a critical role in providing future leaders with the skills and knowledge they will need to thrive in the workforce and help drive California's economy. More than 4,100 degree programs align with the state's workforce demands in fields such as business management, engineering and health care.

At \$5,742 per academic year for full-time undergraduates, the CSU's tuition and fees are lower than those of peer comparison institutions across the country. In 2022, all 23 campuses ranked among the top 100 "Best Bang for the Buck" universities in the West, according to Washington Monthly magazine.

To help students turn their dream of college into reality, the university offers a variety of financial aid options including grants, loans, scholarships, fellowships, veterans aid and work study. During the 2021-22 school year, 82 percent of students received some form of aid, and more than half of the CSU's bachelor's degree recipients graduated with zero student debt.

Earning a CSU degree can change the trajectory of students' lives, as well as the lives of their family members, by opening doors to opportunities for upward mobility. Nearly one-third of CSU students are the first in their families to attend college and more than half of students are from traditionally underrepresented backgrounds.

## INCLUSIVE EXCELLENCE

With the most ethnically, economically and academically diverse student body in the nation, the CSU strives to create a welcoming environment for all members of its campus communities. A CSU education acts as an engine of social mobility, propelling students and their families into higher economic strata following graduation. The CSU provides more than half of all undergraduate degrees earned by California's Latinx, African American and Native American students combined. Twenty-one CSU campuses are currently recognized by the Department of Education as Hispanic-Serving Institutions (HSIs), colleges and universities with a Latinx student enrollment of at least 25 percent.

## MASTER PLAN FOR HIGHER EDUCATION

The CSU was created in 1960 under the California Master Plan for Higher Education. The CSU draws its students from the top third of the state's high school graduates and is California's primary undergraduate teaching institution. In continuing to expand its educational scope and help meet the state's workforce demands for skilled professionals, the CSU offers independent doctorates in audiology, education, nursing practice, occupational therapy and physical therapy, and will soon offer the Doctor of Public Health program.





# GRADUATION INITIATIVE 2025

Graduation Initiative 2025 aims to increase graduation rates for all CSU students while eliminating opportunity and achievement gaps. Through this initiative, the CSU is ensuring that all students regardless of racial, ethnic or financial background have the same opportunities to benefit from the transformative power of a CSU degree.



Since its launch in 2015, the initiative has seen success in bringing completion rates to all-time highs in all categories and continues to focus on narrowing equity gaps between underserved students and their peers.

The CSU has redoubled efforts to eliminate equity gaps by implementing an action plan that includes a reenrollment campaign, expanding credit opportunities and providing digital degree planners for all students.

DEGREES CONFERRED IN 2021-22		
Bachelor's Degrees	109,919	84.7%
Master's Degrees	19,237	14.8%
Doctoral Degrees	626	0.5%
<b>Total</b>	<b>129,782</b>	<b>100%</b>



**129,782**  
degrees conferred

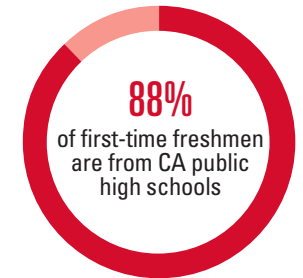
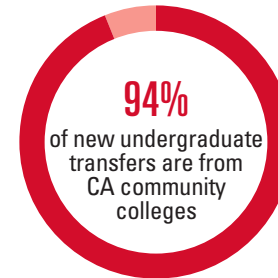
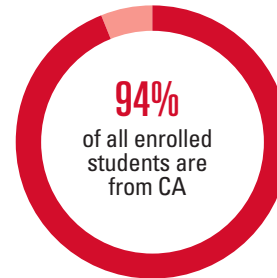
Learn more at [calstate.edu/graduationinitiative](https://calstate.edu/graduationinitiative)



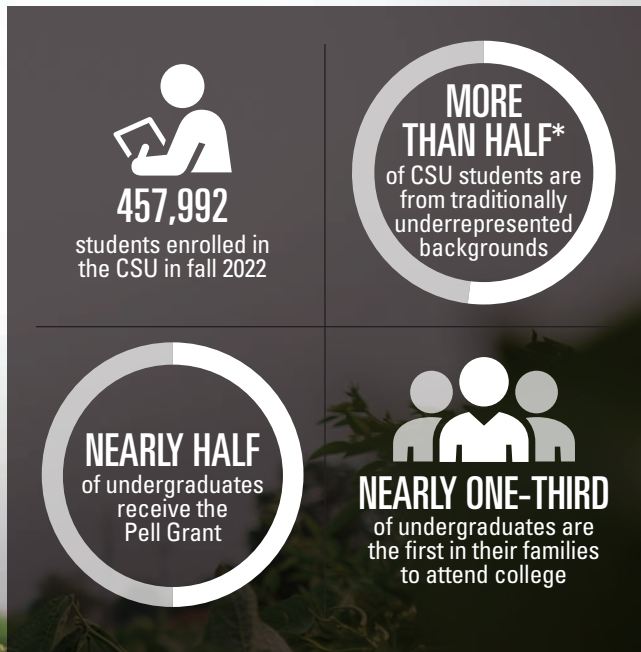
2022 CSU Photo of the Year Runner-Up, Photo by EJ Medellin, CSU Bakersfield

# STUDENTS

CSU students are largely from California and 84 percent of them remain in the state after graduation, applying the skills and knowledge they have learned to help the Golden State's economy thrive.







### SYSTEMWIDE ENROLLMENT – 2017-2022

<b>2017</b>	<b>484,297</b>
<b>2018</b>	<b>481,210</b>
<b>2019</b>	<b>481,929</b>
<b>2020</b>	<b>485,550</b>
<b>2021</b>	<b>477,466</b>
<b>2022</b>	<b>457,992</b>

\*Actual total is 52 percent.

### ENROLLMENT BY CAMPUS

FALL 2022	
Bakersfield	9,261
Channel Islands	5,643
Chico	13,840
Dominguez Hills	15,530
East Bay	12,080
Fresno	23,929
Fullerton	39,729
Humboldt	5,858
Long Beach	38,270
Los Angeles	26,027
Maritime Academy	808
Monterey Bay	6,539
Northridge	36,123
Pomona	27,173
Sacramento	30,883
San Bernardino	19,467
San Diego	36,637
San Francisco	25,046
San José	32,432
San Luis Obispo	21,778
San Marcos	13,469
Sonoma	6,483
Stanislaus	9,738
International Programs	403
CalStateTEACH	846
<b>Total</b>	<b>457,992</b>

### FALL 2022 ENROLLMENT (TOTAL 457,992)

BY GRADE*		
Freshman	82,426	18.0%
Sophomore	52,782	11.5%
Junior	112,037	24.5%
Senior	157,575	34.4%
Postbaccalaureate	11,051	2.4%
Graduate	42,121	9.2%
BY AGE*		
17 and under	8,097	1.8%
18-24	340,623	74.4%
25-29	60,340	13.2%
30-34	23,581	5.1%
35-39	10,936	2.4%
40-49	10,047	2.2%
Over 49	4,368	1.0%
BY ETHNICITY*		
Hispanic/Latino	218,618	47.7%
White	96,010	21.0%
Asian	73,153	16.0%
Two or More Races	19,500	4.3%
Black/African American	18,308	4.0%
International Student	15,479	3.4%
Race and Ethnicity Unknown	14,670	3.2%
Native Hawaiian/Other Pacific Islander	1,401	0.3%
American Indian/Alaska Native	853	0.2%
BY GENDER**		
Female	261,180	57.0%
Male	196,812	43.0%

\*Totals may not add up to 100 percent due to rounding.

\*\*According to federal reporting standards.

## GRADUATE STUDIES

- In fall 2022, the CSU enrolled 53,172 postbaccalaureate/graduate students.
- 19,237 master's degrees were awarded in 2021-22.
- Doctor of Audiology, Doctor of Education, Doctor of Nursing Practice, Doctor of Occupational Therapy and Doctor of Physical Therapy programs serve more than 2,508 doctoral students from diverse backgrounds, preparing them for top leadership roles. The CSU will soon offer the Doctor of Public Health program.

## APPLYING

With 23 universities and thousands of degrees to choose from, the CSU offers more choices and connections than any other public higher education institution in the nation. Students planning to enter the CSU can apply through the online application tool, Cal State Apply, at [calstate.edu/apply](https://calstate.edu/apply).

Due to the large number of applicants, some universities have additional admissions criteria for particular majors or for students who live outside the local campus area. Universities utilize local admission guarantee policies for students who graduate or transfer from high schools and community colleges that are historically served by a CSU in that region.

## ADMISSION REQUIREMENTS

### Freshmen Students

First-time freshmen applicants must meet the standards in each of the following areas:

- Graduate from high school or equivalent
- Complete required college preparatory coursework
- Earn suitable grades in college preparatory coursework
- Achieve a qualifying GPA

### Transfer Students

There are many paths to attending the CSU, including the Transfer Success Pathway program. This new dual admission program guarantees future admission to 2023 high school graduates and beyond who are entering a California community college and who commit to transferring within three years. Many transfer students enter as upper-division transfers and must complete at least 60 semester or 90 quarter units and required general education (GE) before transferring. Students who have earned an Associate Degree for Transfer (ADT) and are accepted to a similar degree program will be admitted to the CSU with junior status.

### Graduate Students

To apply for admission to graduate or postbaccalaureate studies, a student must:

- Earn a baccalaureate degree from an accredited institution with at least a 2.5 GPA.
- Be in good academic standing while satisfactorily meeting the professional, personal, scholastic and other standards for graduate study.

Learn more at [calstate.edu/apply](https://calstate.edu/apply)





### **CSU TUITION AND FEES—2022-23\***

- Undergraduate: \$5,742
- Credential: \$6,660
- Graduate/Postbaccalaureate: \$7,176
- Audiology Doctorate: \$14,742
- Education Doctorate: \$11,838
- Nursing Practice Doctorate: \$15,270
- Occupational Therapy Doctorate: \$17,196
- Physical Therapy Doctorate: \$17,196

(Campus mandatory fees add an average of \$1,778 to student costs.)

### **Graduate Business Professional Fee**

State university tuition fee plus \$270 per semester unit or \$180 per quarter unit.

### **Non-Resident Tuition**

State university tuition fee plus \$396 per semester unit or \$264 per quarter unit.

\*Rates are for academic year

### **FINANCIAL AID**

In 2021-22, nearly \$4.25 billion was distributed to more than 383,000 students—82 percent of the CSU's total student population. The average award was \$11,070. Presidential Scholars programs, which provide full scholarships to National Merit scholars and high school valedictorians, are also available at many CSU campuses.

Learn more at [calstate.edu/financial-aid](https://calstate.edu/financial-aid)



# ALUMNI

CSU alumni make up a global network that is over 4 million strong. As ambassadors to the nation and world, our alumni demonstrate the power of possibility that comes with a CSU degree.

THE CLASS OF

**4**

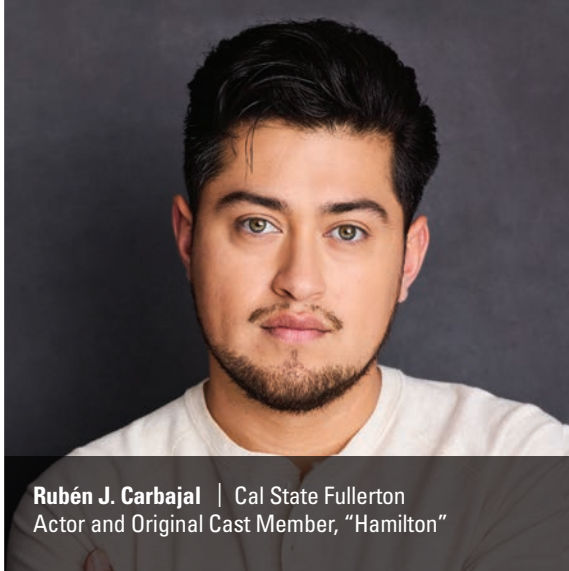
MILLION

**CSU** The California State University





**Dr. Mary C. Barlow** | CSU Bakersfield  
Superintendent, Kern County Superintendent of Schools



**Rubén J. Carbajal** | Cal State Fullerton  
Actor and Original Cast Member, "Hamilton"



**Gracie-Ann Dinkins** | CSU Dominguez Hills  
Surgeon, St. Francis Medical Center



**Sandra Jackson-Dumont** | Sonoma State  
Director and CEO, Lucas Museum of Narrative Art



**Terry Lopez** | Cal State LA  
Director, Inclusion and Equity  
Writers Guild of America West



**Captain Kate McCue** | Cal Maritime  
Captain, Celebrity Cruises



**Jose Antonio Vargas** | San Francisco State  
Member, CSU Board of Trustees  
Founder, Define American

**OUR ALUMNI WORK ACROSS A VARIETY OF INDUSTRIES INCLUDING:**

- Agriculture
- Business
- Entertainment
- Education
- Engineering
- Health Care
- Hospitality
- Technology





**MORE THAN 4 MILLION**  
alumni and counting



**ONE IN EVERY 20**  
Americans with a college  
degree earned it at the CSU



**ONE IN 10**  
employees in California  
is a CSU graduate



**ALUMNI**  
network is larger than the  
population of 23 U.S. states







## EMPLOYEES

Much like the students we serve every day, the CSU's faculty and staff are exceptionally diverse and talented, making the university a special place to both work and learn. Their unparalleled commitment to quality instruction and provision of services is shaping the future of California.

## HEADCOUNT OF EMPLOYEES BY EMPLOYEE GROUP, FALL 2022

Description	Full Time	Part Time	Total	% of Total
Instructional Faculty	13,601	14,199	27,800	49.4%
Non-Instructional Faculty	1,036	306	1,342	2.4%
Staff	18,794	661	19,455	34.6%
Executive and Management	4,510	27	4,537	8.1%
Represented Student Employees	0	3,122	3,122	5.5%
<b>Total</b>	<b>37,941</b>	<b>18,315</b>	<b>56,256</b>	<b>100%</b>

## INSTRUCTIONAL FACULTY BY TIME BASE, FALL 2022

Time Base	Count	% of Total
Full Time	13,601	48.9%
Part Time	14,199	51.1%
<b>Total</b>	<b>27,800</b>	<b>100%</b>

## FULL-TIME INSTRUCTIONAL FACULTY BY ACADEMIC RANK, FALL 2022

Academic Rank	Full Time Count	% of Total
Professor	4,559	33.5%
Associate Professor	3,024	22.2%
Assistant Professor	2,920	21.5%
Lecturer	3,098	22.8%
<b>Total</b>	<b>13,601</b>	<b>100%</b>

Learn more at [calstate.edu/csu-system/faculty-staff/employee-profile](https://calstate.edu/csu-system/faculty-staff/employee-profile)

Note: Data includes all employees except for non-represented student employees, other intermittent or casual employees and faculty teaching in extension, special sessions and summer sessions.







## RESEARCH AND COMMUNITY IMPACT

CSU students apply the knowledge gained in the classroom to find solutions to real-world problems through involvement in applied research and service learning. Under the guidance of world-renowned faculty who are experts in their fields, students develop leadership skills while benefiting their communities.



## RESEARCH, SCHOLARSHIP AND CREATIVE ACTIVITY

A hallmark of CSU research is immersive student learning and discovery that address California’s most urgent challenges including those in agriculture, water, fire prevention and cybersecurity. Undergraduate students who participate in faculty-mentored research are better prepared for future careers, graduate education and leadership roles that contribute to their respective communities.

### Faculty Scholarship

CSU Channel Islands, Cal State LA, CSU Monterey Bay, Cal Poly Pomona, Sacramento State and Cal Poly San Luis Obispo were among the top producers of Fulbright Scholars for master’s degree-granting institutions in 2023. In addition, nine CSU campuses are designated as Fulbright Hispanic-Serving Institution (HSI) Leaders.

California’s Department of Health Care Access and Information (HCAI) awarded \$35 million to 11 CSU campuses to increase the number of social workers. The National Science Foundation (NSF) awarded \$10 million to 15 CSU campuses to support HSI STEM education.

Thirty faculty received NSF’s prestigious CAREER awards to advance their cutting-edge research while engaging students in hands-on experiences.

### Student-Led Projects

Undergraduate and graduate students compete on their campuses and systemwide with presentations of their research, scholarship and creative activity. Graduate students present a three-minute pitch of their thesis at a systemwide competition. A student entrepreneurship competition facilitates student-owned startup companies and supports community-based economic development.

### Research Funding

Since June 2021, sponsored program expenditures have increased by \$45 million to reach a total of \$708 million annually, reflecting the importance placed on research in the CSU.

Cal State East Bay, Fresno State, Cal State Fullerton and Cal State San Bernardino joined Cal State Long Beach, San Diego State and San Francisco State as Carnegie R2 universities in 2022.

Learn more at [calstate.edu/impact-of-the-csu/research](https://calstate.edu/impact-of-the-csu/research)



CSU RESEARCH AND SPONSORED PROGRAMS 2021-22		
Local	\$21,968,000	3.1%
Federal	\$452,329,000	63.9%
Nongovernment	\$83,220,000	11.7%
State	\$150,719,000	21.3%
<b>Total</b>	<b>\$708,236,000</b>	<b>100%</b>



## COMMUNITY ENGAGEMENT AT THE CSU

For 25 years, the CSU Center for Community Engagement has been supporting campus efforts to prepare students for success by equipping them with the skills and opportunities to excel in the workforce and strengthen the social fabric of the state of California.

For the 2021-22 academic year, students immersed themselves in a broad spectrum of community-engaged teaching, learning and service experiences that helped to promote their sense of belonging, self-empowerment and lifelong learning.

Despite the continued effects of the COVID-19 pandemic, campus centers for community engagement and service, in partnership with 946 faculty and 3,754 community organizations, have:

- Made nearly 2,000 service-learning courses available to 35,000 CSU students, who contributed 596,000 hours of service to their communities through virtual and in-person activities.
- Developed AmeriCorps programs, one-day service and alternative break opportunities, community forums, voter registration drives and community-based research experiences that enabled an additional 17,000 students to provide more than 1.4 million hours of direct service to California's communities.
- Raised more than \$9.6 million to support community engagement, a return of \$9 for every dollar invested by the state through California's Call to Service initiative.

Learn more at [calstate.edu/cce](https://calstate.edu/cce)



4,700  
partners



52,000  
student volunteers



2 MILLION  
hours of service



\$9.6 MILLION  
raised



## CSU FUNDING

The CSU's operating budget has two main funding sources: the state General Fund and student tuition and fees. State funding covers 55 percent of the CSU's operating costs, with tuition and fees making up the majority of the remainder. Auxiliaries and philanthropic support generate additional revenue needed for essential services that supplement state-supported activities.



## CSU 2022-23 STATE SUPPORT

General Fund Appropriations <sup>1</sup>	\$4,589,590,000
Gross Tuition Fees and Other Fee Revenue	\$3,139,146,000
Total General Fund and Student Fees	\$7,728,736,000
Deferred Maintenance <sup>2</sup>	\$125,000,000
San Francisco State Student Housing Projects <sup>2</sup>	\$116,300,000
Other One-Time State Funding <sup>2</sup>	\$857,591,000
<b>Total State Support</b>	<b>\$8,827,627,000</b>

## Campus Budgets 2022-23

(General Fund and Gross Tuition Fee & Other Fee Revenue)	
Bakersfield	\$165,921,000
Channel Islands	\$135,151,000
Chico	\$240,382,000
Dominguez Hills	\$230,061,000
East Bay	\$206,093,000
Fresno	\$356,088,000
Fullerton	\$520,685,000
Humboldt	\$142,963,000
Long Beach	\$542,089,000
Los Angeles	\$363,019,000
Maritime Academy	\$48,522,000
Monterey Bay	\$140,972,000
Northridge	\$505,932,000

## Campus Budgets 2022-23 (Continued)

Pomona	\$369,891,000
Sacramento	\$416,881,000
San Bernardino	\$283,889,000
San Diego	\$546,033,000
San Francisco	\$410,496,000
San José	\$456,135,000
San Luis Obispo	\$434,103,000
San Marcos	\$209,039,000
Sonoma	\$125,566,000
Stanislaus	\$159,694,000
<b>Campus Total</b>	<b>\$7,009,606,000</b>
Chancellor's Office	\$198,945,000
Systemwide Provisions	\$520,185,000
<b>Total</b>	<b>\$7,728,736,000</b>

Learn more at [calstate.edu/budget](https://calstate.edu/budget)

<sup>1</sup> The 2022-23 final budget total includes \$305.6M for General Obligation (GO) and lease revenue bonds.

<sup>2</sup> Fiscal Year 2022-23 one-time budget allocations appropriated by the 2022 Budget Act (Senate Bill 154, Chapter 43).

## AUXILIARY ORGANIZATIONS

Auxiliary organizations<sup>1</sup> provide a wide array of support services, programs and facilities that further the educational mission of the CSU. Funds are used to facilitate students' co-curricular activities, administer research programs, operate student unions, support recreational programs, coordinate commercial enterprises and develop public-private partnerships on behalf of the university. The 93 self-supporting auxiliary organizations operate without state General Fund money and are organized on each campus as separate legal entities.

### In 2021-22:

- The CSU's auxiliary organizations reported \$6.37 billion in aggregate assets—24 percent of the CSU's total combined assets. Most of these assets were held by philanthropic foundations with \$3.38 billion of total assets mainly from endowment investments.
- Auxiliary organizations' net position (i.e., equity) was \$4.33 billion, of which \$3.03 billion is restricted by external parties (i.e., donor endowments). This represents 95.33 percent of CSU's combined restricted net position.
- The aggregate revenue from grants, contracts and gifts was \$1.07 billion, which represents 21 percent of CSU's combined total grant, contract and gift revenues.

Learn more at [auxiliary.calstate.edu](https://auxiliary.calstate.edu)



<sup>1</sup> Also called discretely presented component units.



## PHILANTHROPIC SUPPORT

In 2021-22, the CSU's donors provided steady philanthropic support. The university received more than \$567 million in gift commitments and more than \$473 million in gift receipts. Through their contributions, our donors underscore their trust in the university to create long-lasting success for our students, their families and communities across the state and nation.

### Highlights of giving in 2021-22:

- Gifts from 238,608 individual donors totaled almost \$189 million.
- Gifts from alumni comprised 38 percent of individual giving, with \$71.6 million in contributions.
- Gifts from organizations totaled \$284 million, including \$83 million from foundations and nearly \$115 million from corporations.
- The total endowment market value remains strong at \$2.3 billion systemwide, providing support for programs and students in perpetuity.

Learn more at [calstate.edu/donorsupport](https://calstate.edu/donorsupport)



**\$567 MILLION**  
in charitable  
gift commitments



**238,608**  
individual  
donors



**\$2.3 BILLION**  
endowment  
market value





## CSU LEADERSHIP

Responsibility for the CSU is vested in a 25-member Board of Trustees, the majority of whom are appointed by the governor to eight-year terms.

Faculty, alumni and two student trustees serve two-year terms. The trustees appoint the chancellor, who is the university's chief executive officer, and the presidents, who are the chief executive officers of their respective campuses and report to the chancellor. The trustees, chancellor and presidents develop systemwide policies.



## BOARD OF TRUSTEES (ex officio members)

Governor Gavin Newsom  
 Lieutenant Governor Eleni Kounalakis  
 Speaker of the Assembly Anthony Rendon  
 State Superintendent of Public Instruction Tony K. Thurmond  
 Interim Chancellor Jolene Koester

## APPOINTED MEMBERS (term ends during the year shown)

Larry L. Adamson (alumni trustee) (2024)  
 Diana Aguilar-Cruz (student trustee) (2024)  
 Diego Arambula (2028)  
 Raji Kaur Brar (2029)  
 Jack B. Clarke Jr., Vice Chair (2027)  
 Douglas Faigin (2025)  
 Jean Picker Firstenberg (2026)  
 Wenda Fong, Chair (2024)  
 Mark Ghilarducci (2031)  
 Leslie Gilbert-Lurie (2030)  
 Lillian Kimbell (2024)  
 Maria Linares (student trustee) (2023)  
 Julia I. Lopez (2028)  
 Jack McGrory (2031)  
 Anna Ortiz-Morfit (2025)  
 Yammilette “Yami” Rodriguez (2029)  
 Romey Sabalius (faculty trustee) (2023)  
 Lateefah Simon (2027)  
 Christopher Steinhauer (2026)  
 Jose Antonio Vargas (2030)

## CAMPUS PRESIDENTS (date is the appointment year)

Bakersfield	Lynnette Zelezny (2018)
Channel Islands	Richard Yao (2022)
Chico	Gayle E. Hutchinson (2016)
Dominguez Hills	Thomas A. Parham (2018)
East Bay	Cathy A. Sandeen (2020)
Fresno	Saúl Jiménez-Sandoval (2021)
Fullerton	Framroze Virjee (2019)
	Sylvia A. Alva (Interim) (2023)
Humboldt	Tom Jackson Jr. (2019)
Long Beach	Jane Close Conoley (2014)
Los Angeles	William A. Covino (2013)
	Leroy M. Morishita (Interim) (2023)
Maritime Academy	Thomas A. Cropper (2012)
	Michael J. Dumont (Interim) (2023)
Monterey Bay	Vanya Quiñones (2022)
Northridge	Erika D. Beck (2020)
Pomona	Soraya M. Coley (2015)
Sacramento	Robert S. Nelsen (2015)
San Bernardino	Tomás D. Morales (2012)
San Diego	Adela de la Torre (2018)
San Francisco	Lynn Mahoney (2019)
San José	Cynthia Teniente-Matson (2022)
San Luis Obispo	Jeffrey D. Armstrong (2011)
San Marcos	Ellen J. Neufeldt (2019)
Sonoma	Ming-Tung “Mike” Lee (Interim) (2022)
Stanislaus	Ellen N. Junn (2016)
	Susan E. Borrego (Interim) (2023)

Note: Leadership is current as of April 2023.

## ADMINISTRATIVE LEADERS

Jolene Koester  
 Interim Chancellor

Andrew Jones  
 Executive Vice Chancellor and  
 General Counsel

Steve Relyea  
 Executive Vice Chancellor and  
 Chief Financial Officer

Jessica Darin  
 Interim Chief of Staff

Leora D. Freeman  
 Vice Chancellor,  
 Human Resources

Michelle Kiss  
 Associate Vice Chancellor and  
 Chief of Staff, Board of Trustees

Vlad Marinescu  
 Vice Chancellor and Chief Audit Officer

Nathan Evans  
 Dilcie Perez  
 Deputy Vice Chancellor, Academic and Student Affairs

Lori A. Redfeam  
 Administrator in Charge,  
 University Relations and Advancement  
 Associate Vice Chancellor, Systemwide Advancement

Learn more at [calstate.edu/leadership](https://calstate.edu/leadership)





**Strategic Communications and Public Affairs**

**401 Golden Shore, 4th Floor  
Long Beach, CA 90802-4210**

**(562) 951-4800**

**publicaffairs@calstate.edu**

**[calstate.edu](http://calstate.edu)**

**f @calstate**

**@thecsu**

**Published April 2023**