

Engaging Disadvantaged Communities in Water Issues: Leveraging Data, Technology and GIS

Danielle Bram

Director

Center for Geospatial Science and Technology
California State University, Northridge



CENTER FOR GEOSPATIAL
SCIENCE & TECHNOLOGY
California State University, Northridge

WRPI Annual Conference

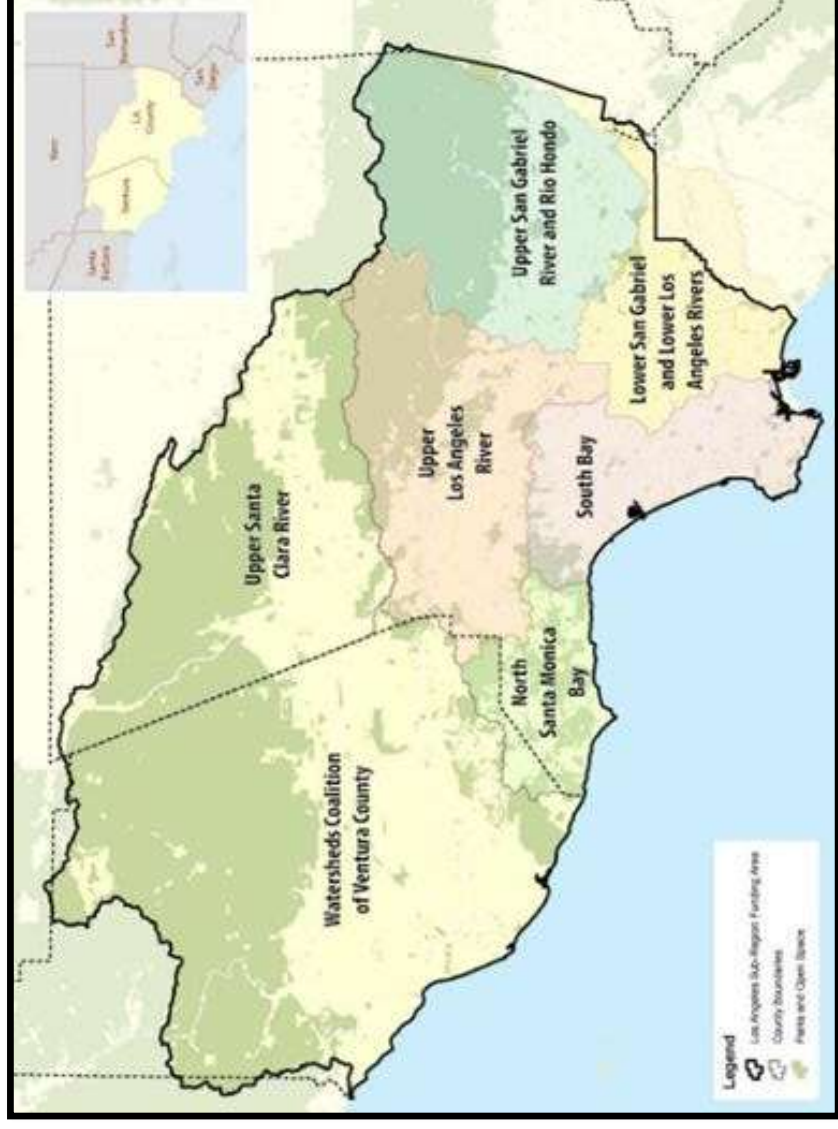
April 15, 2021



Project Overview

Disadvantaged Communities Involvement Program (DACIP)

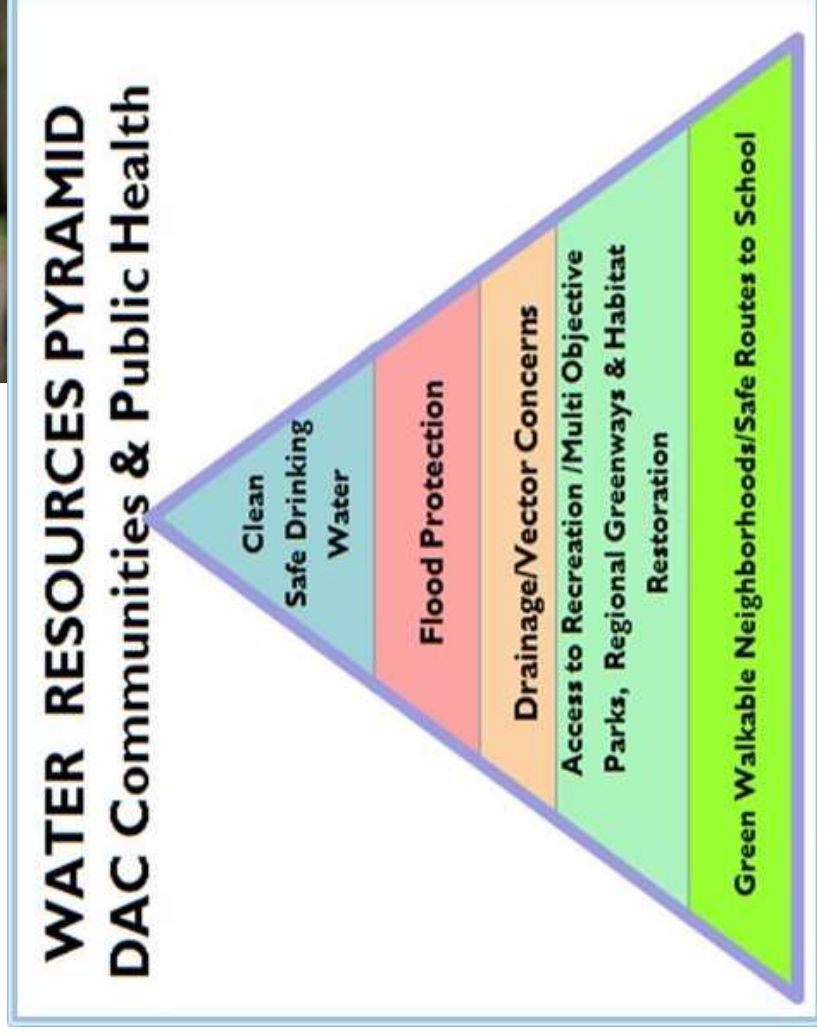
- CA Prop 1 Funding via CA Dept. of Water Resources
- 5 County Area
- Main Goals:
 - Identify DACs
 - Increase understanding of DAC water needs
 - Develop data-driven solutions and support for Technical Assistance project selection



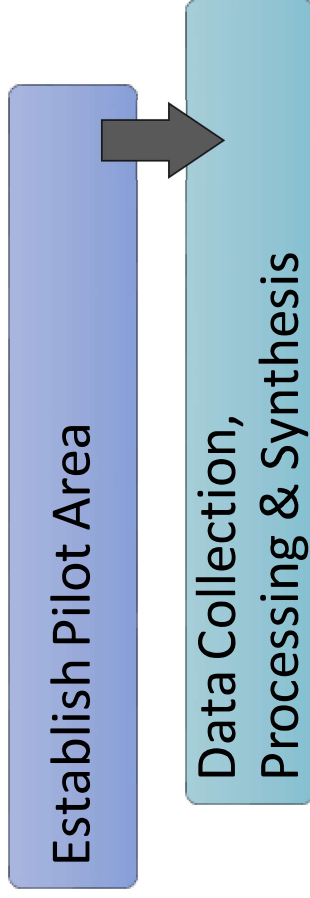
Project Overview

Water Resources

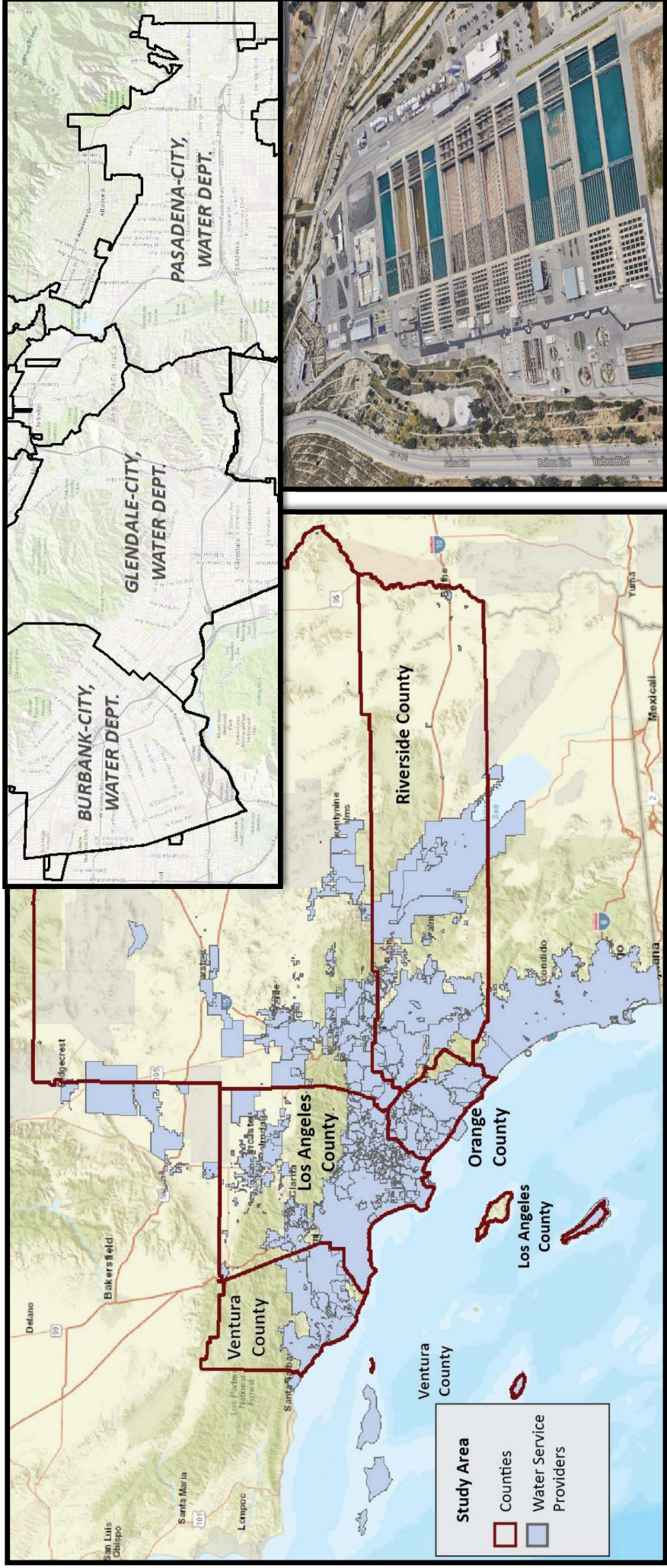
- Importance
 - ✓ Water Quality/Health
 - ✓ Drinking Water
 - ✓ Recreation
 - ✓ Subsistence
- Water Service Providers



Completed Work

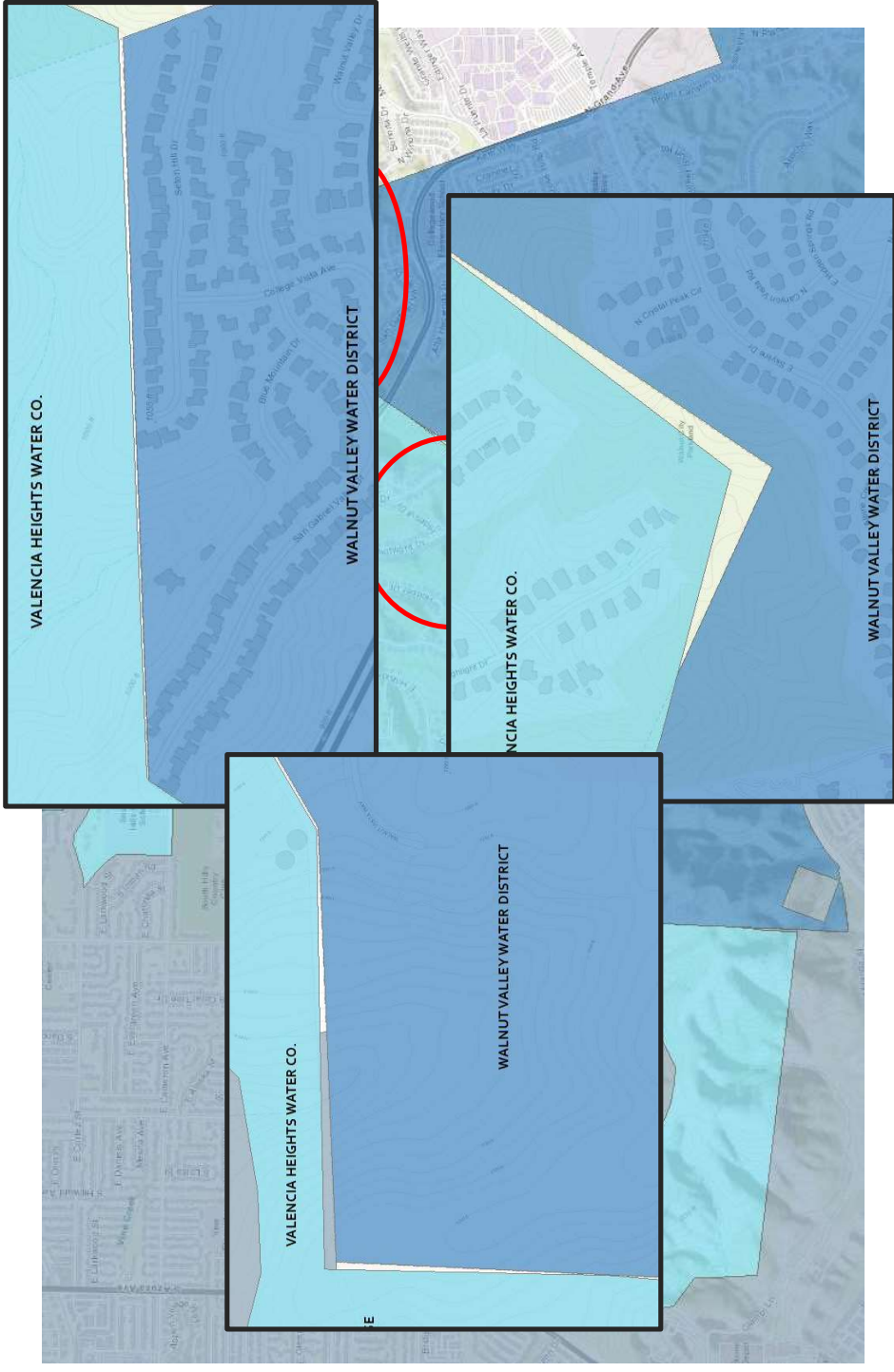


Data Collection, Processing & Synthesis: Water Service Providers



Data Collection, Processing & Synthesis: Water Service Providers

- Service Area Boundary Challenges
 - Self reporting jurisdictional zones
 - Overlaps and gaps
- CA Water Board SAFER group











Data Collection, Processing & Synthesis: Data Hub

Los Angeles-Ventura DACIIP Involvement Program Data Hub

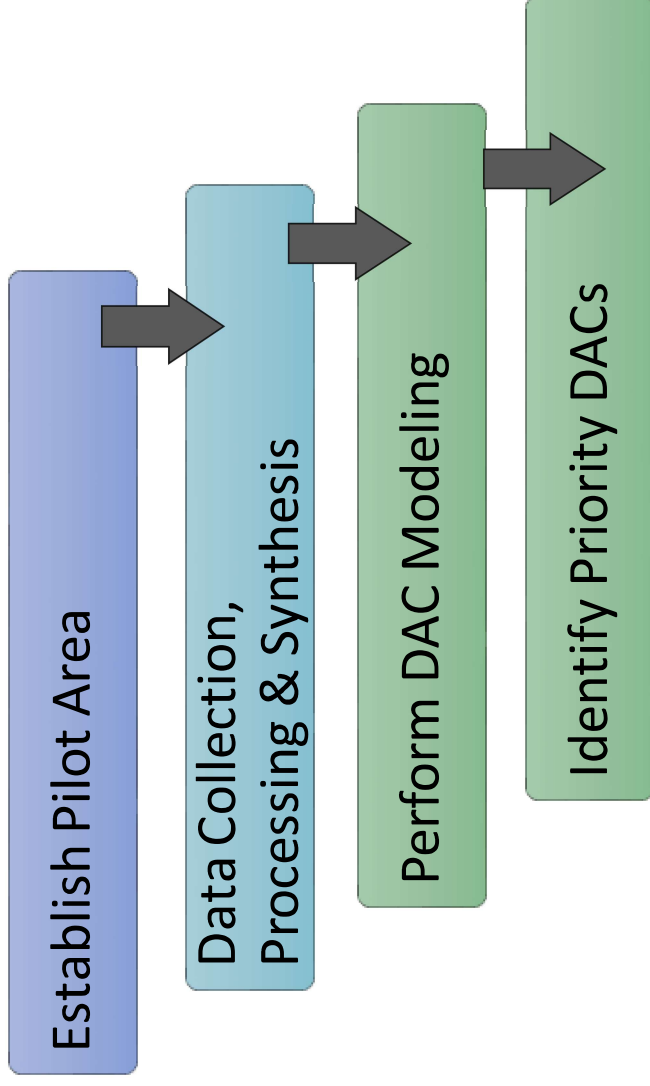
This data hub serves as a central repository for data and data-related products supporting the Disadvantaged Community Involvement Program (DACIIP) through the WaterTalks effort. To learn more, please visit the [WaterTalks website](#).

Preview Data and Data Products

Q Search

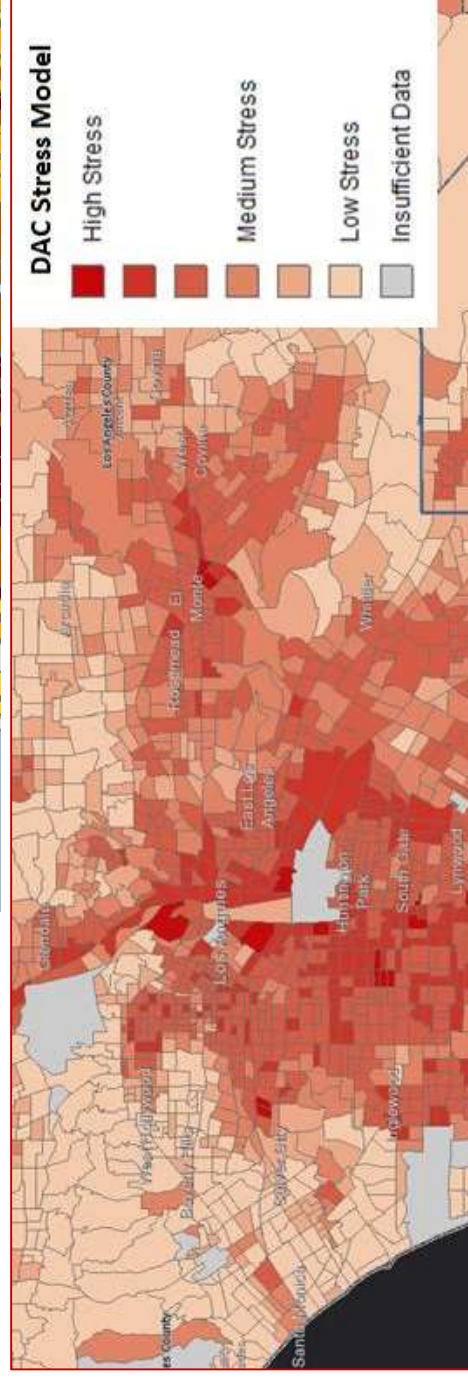
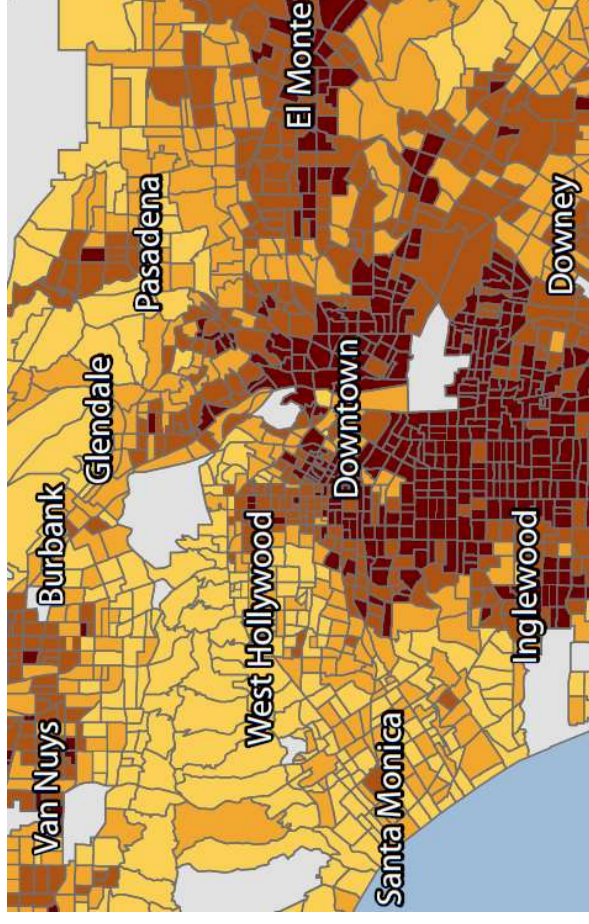
			
Boundary	Climate	DACIIP Reference	DACIIP Live
			
Green Infrastructure	Health	Hydrography	School

Completed Work

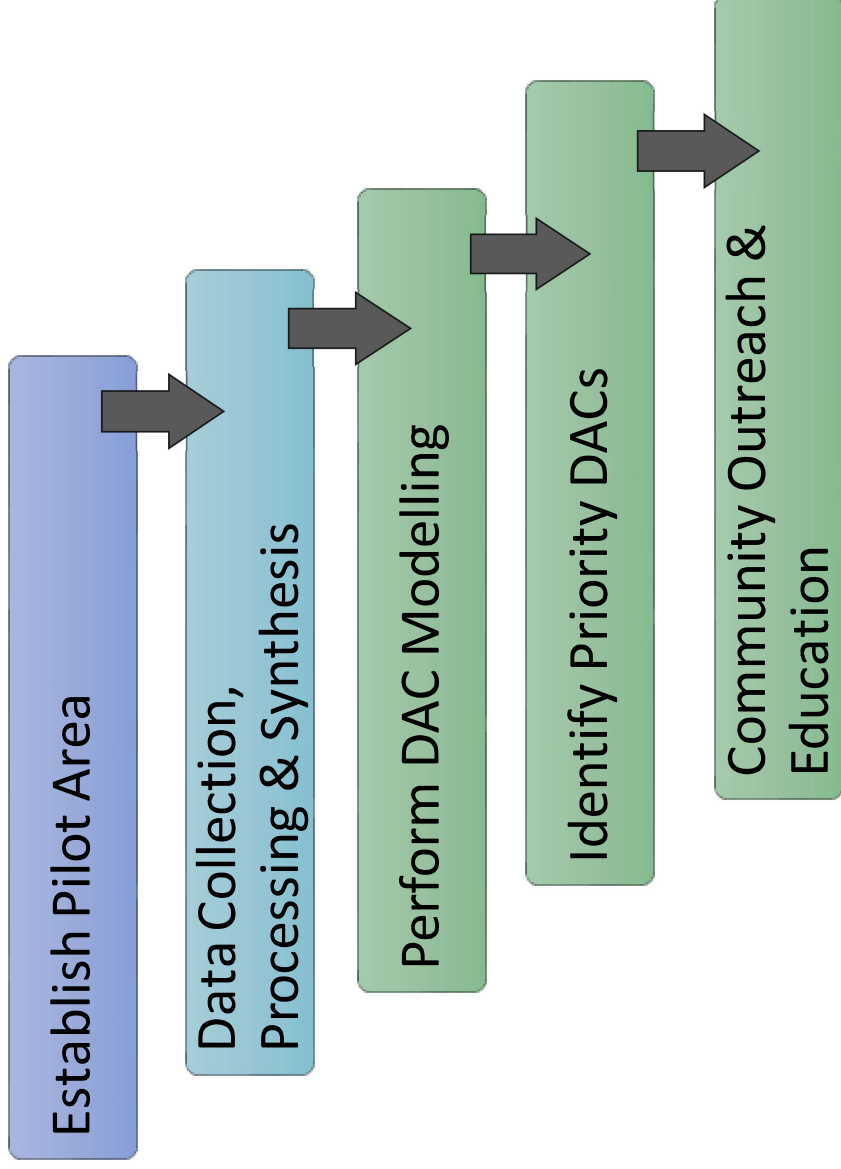


DAC Modeling


- Existing Models
- Models Used Within This Project:
 - Stress Model
 - Street Weighted Model
(in collaboration with Dr. Mike Reibel – Cal Poly Pomona)



Completed Work



Community Outreach & Education: Water Talks




WATERTALKS


! All in-person WaterTalks Events and Marketing Events are currently postponed, but some virtual engagement is now moving forward.

Due to the Covid-19 shelter-in-place and social distancing requirements, all in-person WaterTalks Community Engagement and Marketing Events are postponed as following:

- All in-person events in Ventura County, the Santa Clarita Valley and Los Angeles County have been postponed until further notice

Please continue to check this website for updates.

 Upcoming Virtual Events


 View Past Events

 View a Fact Sheet related to Covid-19 and water safety and water supply

[English](#) [Spanish](#)

WATERTALKS IS ABOUT COMMUNITY PLANNING FOR WATER

Navigate the tabs below to find out more information

 **FIND YOUR COMMUNITY**

What is WaterTalks?

How do we plan for water in California?

Jobs related to water

WHAT IS WATERTALKS?

WaterTalks is a public program designed to generate and increase community involvement in planning a sustainable water future for California. Its goal is to explore the strengths and opportunities of 128 communities in Los Angeles

Clean Water

Clean water is essential to our health, safety, and well-being.

Flood Protection

Flood protection strategies are vital to preventing flooding catastrophe in our communities.

Community Outreach & Education: Community Toolkits

Water Talks Toolkit: 02_08_19_DRAFT_reduced.pdf - Adobe Acrobat Pro DC

File Edit View Window Help

Home Tools Water_Talks_Toolkit... x (beta of 14)

1 WHAT IS THE WATER TALKS TOOLKIT

WaterTalks is a public program designed to generate discussion and concerns about the sustainable water future for California. Its goal is to help water users understand the current water situation in the Los Angeles and Ventura counties communities, their management, share their concerns, and help inform the development of water conservation, reuse, and other related projects based on areas of greatest concern.

WaterTalks aims to ensure that regional water resource conditions, and higher income parts of the community, are represented in the WaterTalks process. WaterTalks is providing a series of community outreach events throughout the Los Angeles basin.

WATER RESOURCES PYRAMID COMMUNITIES & PUBLIC HEALTH

WaterTalks aims to ensure that regional water resource conditions, and higher income parts of the community, are represented in the WaterTalks process. WaterTalks is providing a series of community outreach events throughout the Los Angeles basin.

3 BASE MAP

Base map showing the Los Angeles basin with various water service areas and infrastructure.

HOME / GIS WORKING LIBRARY

GIS WORK

Public and Private Schools

UCI

GLAC Disadvantaged Commu.

Water Systems: Find address or place

Layers: Water Systems

Sublayers: Legend Opacity

Merged_Retailers_WaterHub_1May17

Affordability_hub_basemap_052815

service_areas

1 3 5 7 9 11 13

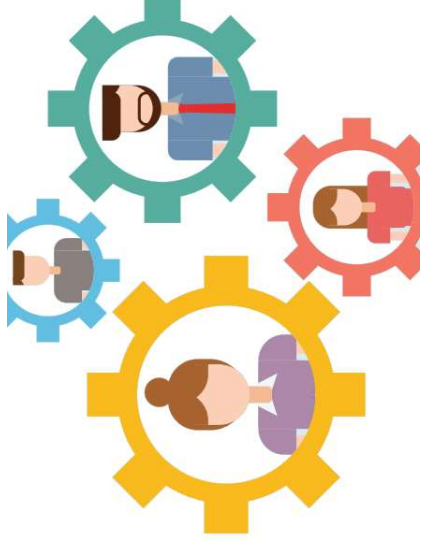
Merged_Retailers_WaterHub_1May17

CITY OF GLENDALE

NAME1	CITY OF GLENDALE
MET_MEMBER	YES
RET_TYPE	CITY RETAILER
Rates_20_1	70.09
Rates_20_2	841.08
Import	16,550.00
Imp_Perc	59.11
GWater	9,788.00

City of Pasadena, County of Los Angeles, Bureau of Land Management...

Ongoing and Future Work



Community & Agency Needs Assessments

Water issues and opportunities in your home and community

6. What water-related issues are of greatest concern in your community?*

Choose your top 3 concerns.

Drinking water quality

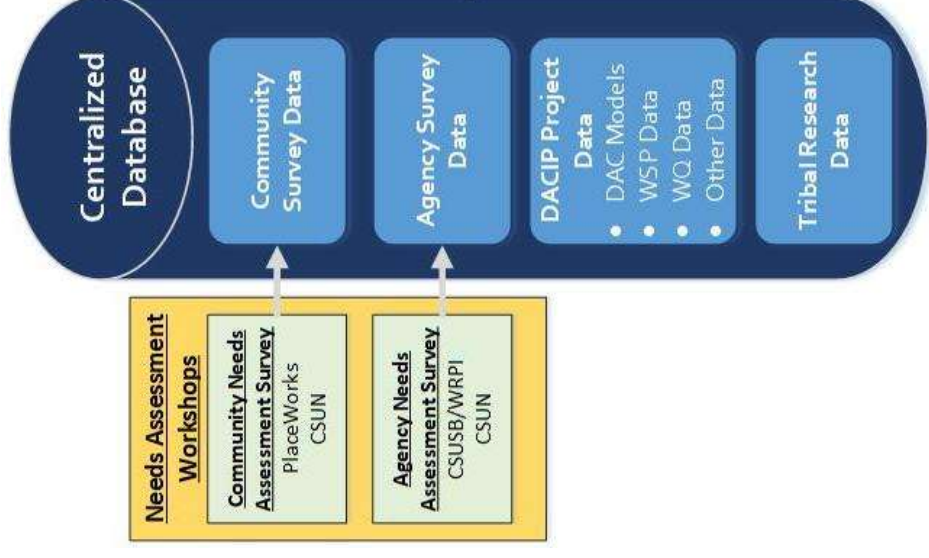
Drinking water availability

Water availability (wildfire suppression, agriculture, other)

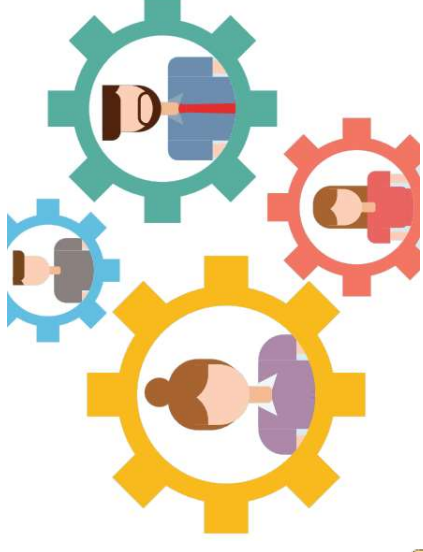
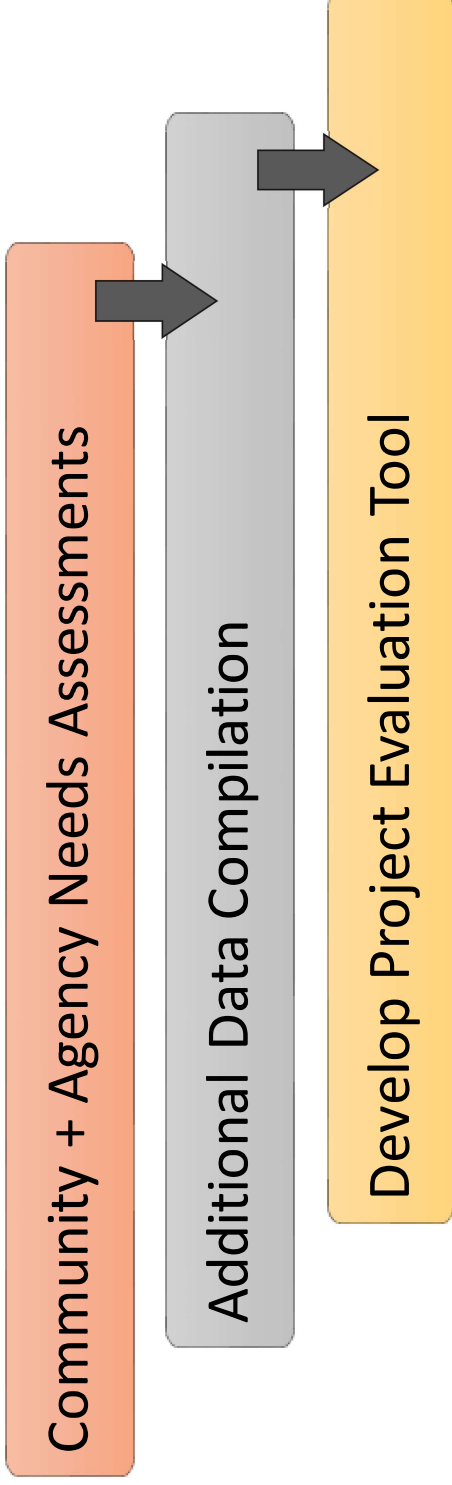
High cost of water

Issues related to wastewater (sewer or septic systems)

Flooding



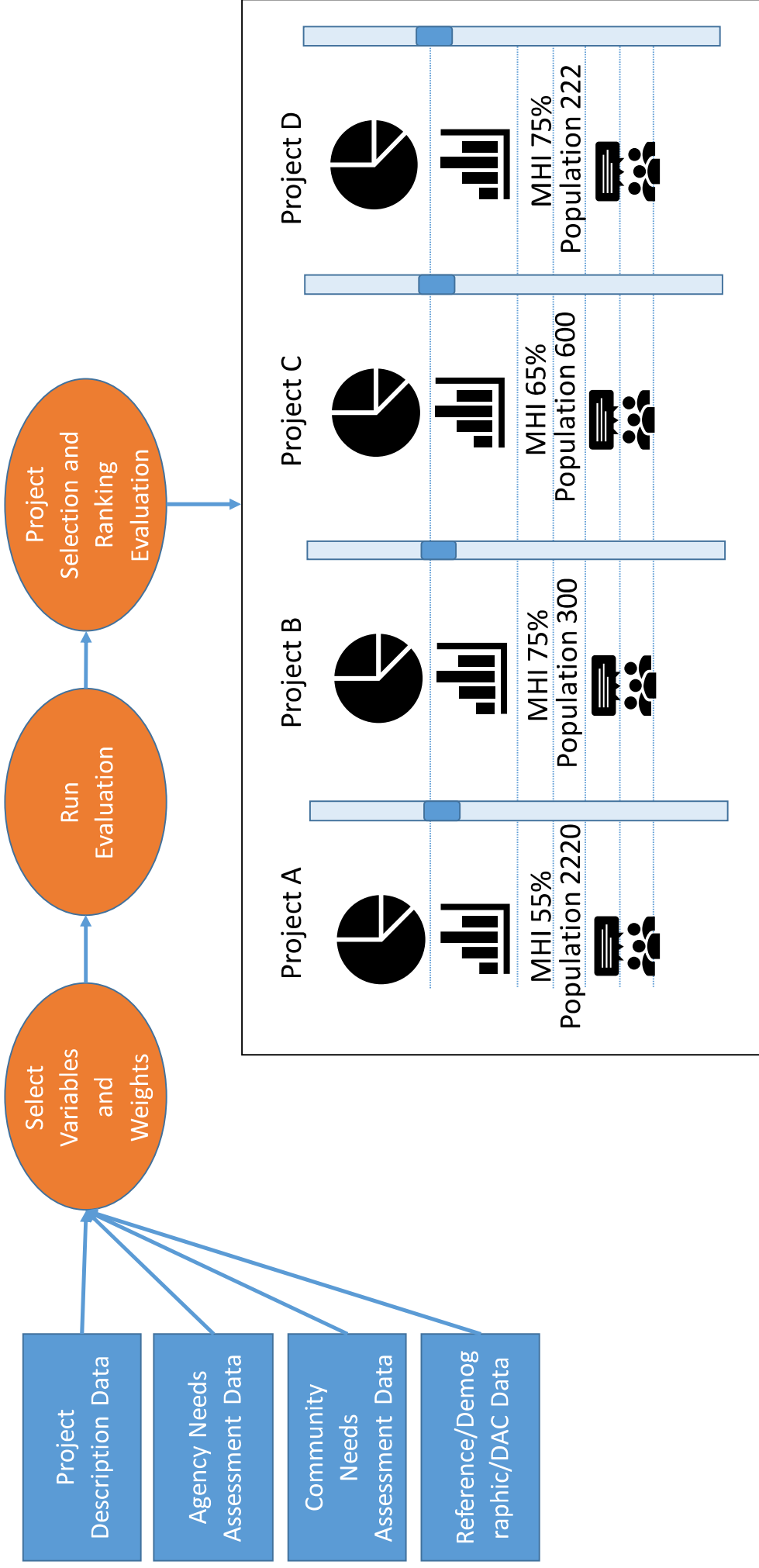
Ongoing and Future Work



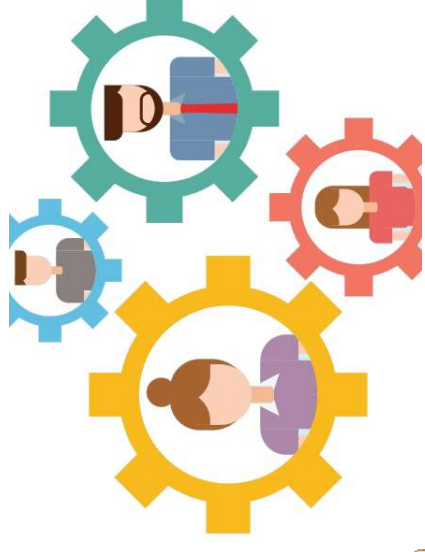
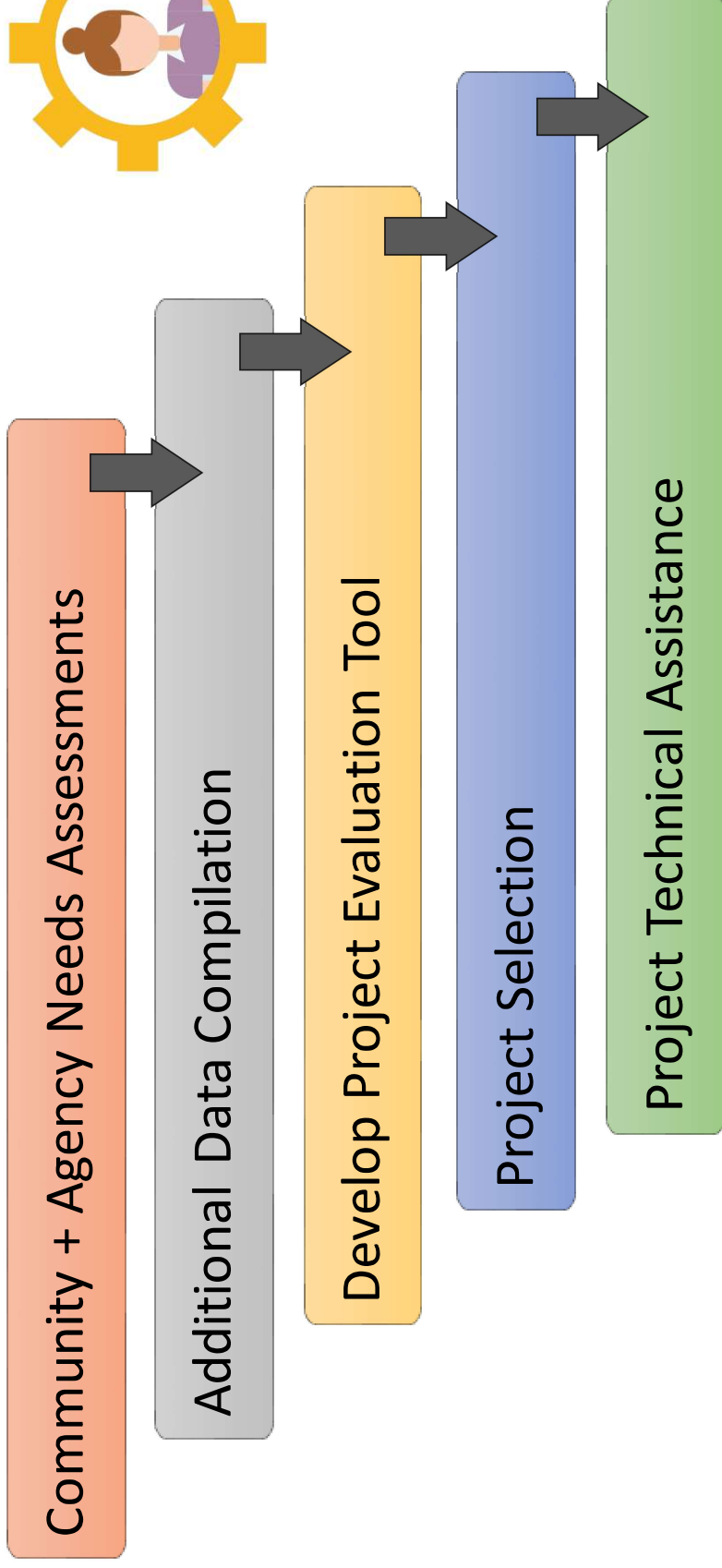
Project Evaluation

- **Technical Assistance Proposed Project Evaluation Dashboard (TAPPED)**
- Assists Project Task Force with data driven project evaluation & selection
- Uses Multi Criteria Decision Analysis (MCDA) technology
 - Spatial + Nonspatial data analyzed
 - Ties all data components together
 - Weight components of importance
 - Interactive & user-friendly
- In collaboration with Dr. Soheil Boroushaki & Vlad Jimenez (CSUN)

Project Evaluation



Ongoing and Future Work



Questions?



CENTER FOR GEOSPATIAL
SCIENCE & TECHNOLOGY
California State University, Northridge

Danielle Bram

Danielle.bram@csun.edu

Director

Center for Geospatial Science and Technology
CSU, Northridge



Boykin Witherspoon

bwithers@csusb.edu

Executive Director

CSU Water Resources and Policy Initiatives
CSU, San Bernardino