

\$648M
2020-21
PROPOSED INCREASE

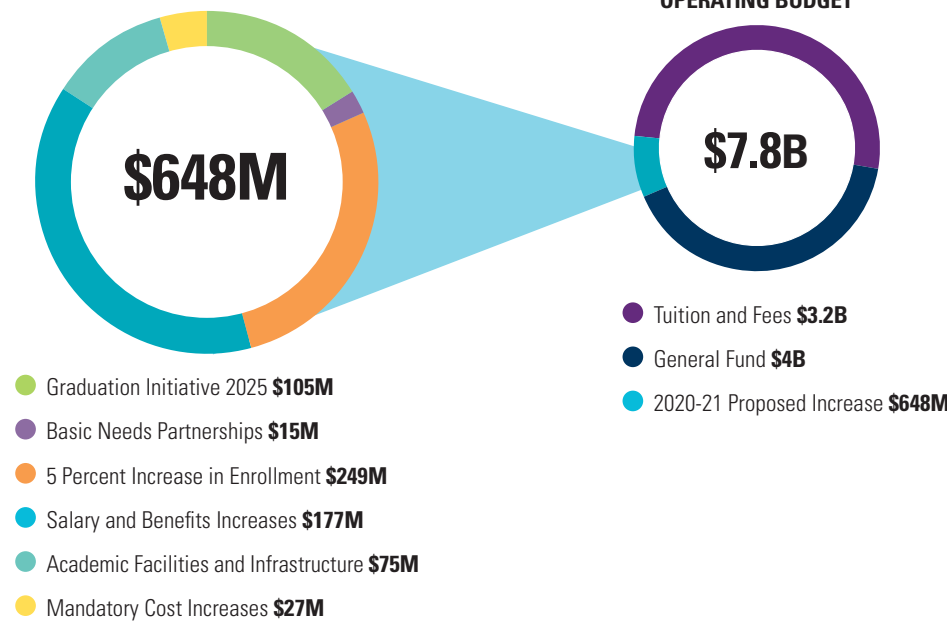
\$7.2B
CURRENT
OPERATING BUDGET

127,400
2018-19 GRADUATES

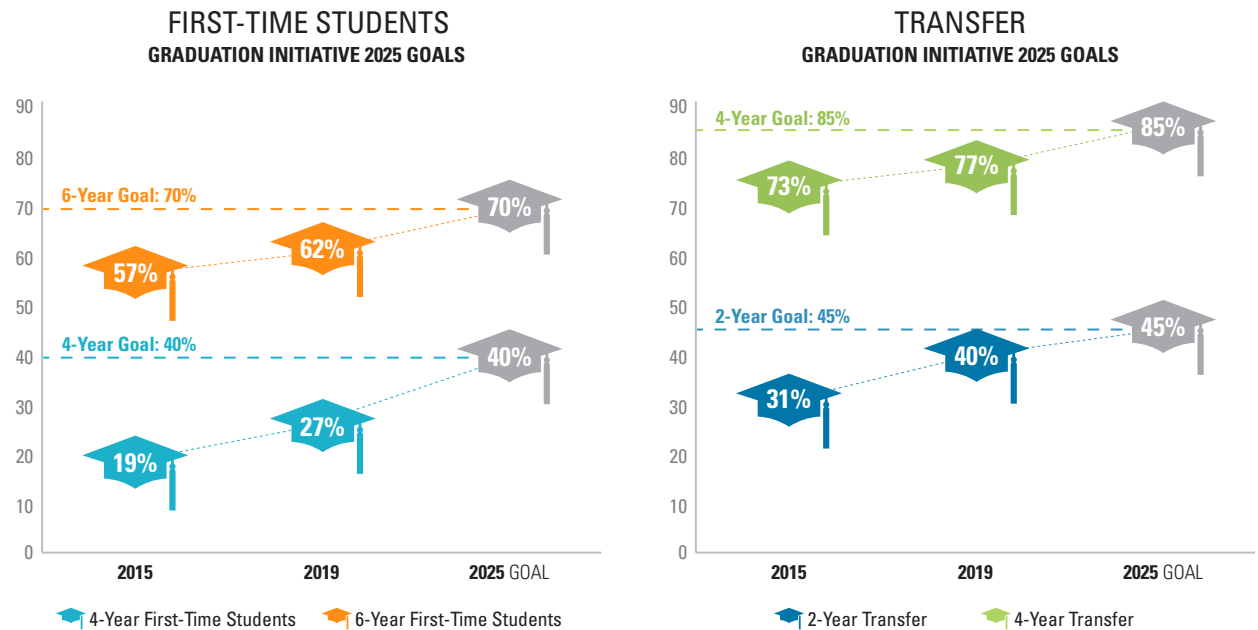
481,210
STUDENTS IN FALL 2018

LARGEST
PUBLIC 4-YEAR UNIVERSITY
IN THE COUNTRY

2020-21 PROPOSED INCREASE



CSU IS ON TRACK TO MEET ITS SYSTEMWIDE GRADUATION RATE GOALS BY 2025



WHO DO WE SERVE?

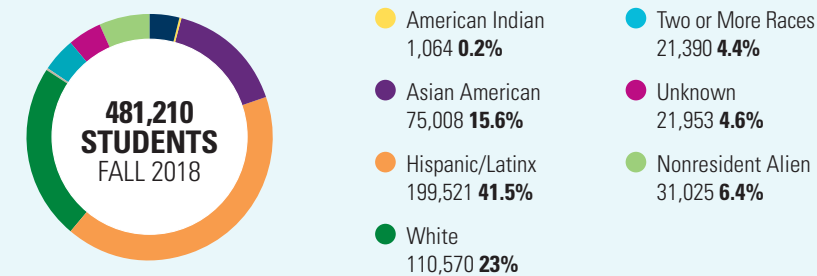
94%
OF STUDENTS ARE FROM CALIFORNIA

32%
OF UNDERGRADUATES ARE THE FIRST IN THEIR FAMILIES TO ATTEND COLLEGE

47%
OF UNDERGRADUATES ARE TRADITIONALLY UNDERREPRESENTED STUDENTS OF COLOR

91%
OF NEW UNDERGRADUATE TRANSFERS ARE FROM CALIFORNIA COMMUNITY COLLEGES

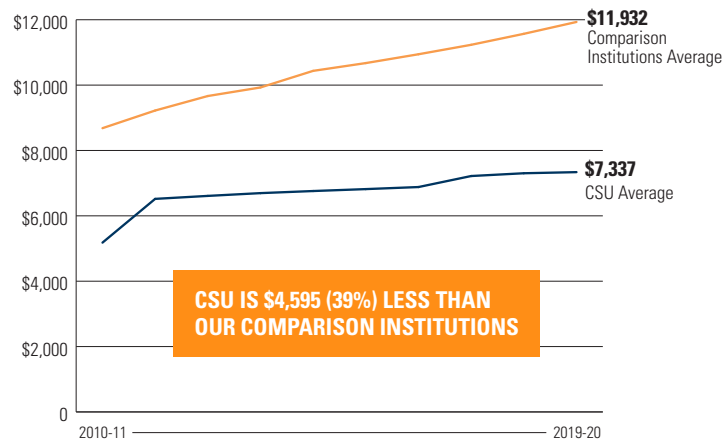
THE CSU SERVES A DIVERSE STUDENT POPULATION



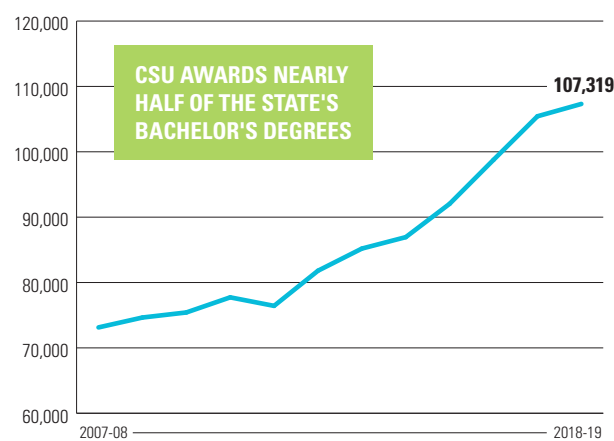
CSU'S STATE UNIVERSITY GRANT PROGRAM AWARDED MORE THAN **\$701 MILLION** TO OVER **135,000** STUDENTS.

- 84%** OF CSU STUDENTS RECEIVED FINANCIAL AID
- 59%** OF CSU UNDERGRADUATES PAID \$0 TUITION
- 50%** OF CSU UNDERGRADUATES RECEIVED A FEDERAL PELL GRANT

CSU TUITION AND FEES VS. COMPARISON INSTITUTIONS
(Based on Average Resident Undergrad)



CSU IS AWARDING MORE BACHELOR'S DEGREES THAN EVER



RESIDENT FULL-TIME EQUIVALENT STUDENTS (FTES) FUNDED ENROLLMENT

