

EOC OF EOC'S

Systemwide Emergency Support Team
Overview

CSU

**The California
State University**

Introductions

Jenny Novak, CEM

- First Director of SW EMC, with CSU since 6/20
- 16 years EM experience
- CalOES Disaster Response
- CSU Northridge Emergency Manager
- Local level experience
- Hazards Geography academic background
- NPS Center for Homeland Defense & Security alumna

Stephanie Kim, MPH

- First EMC Analyst, with CSU since 4/21
- 3 years EM experience
- City of Los Angeles Emergency Management Department (EMD)
- County of Los Angeles Office of Emergency Management (OEM)
- Masters of Public Health at University of Southern California

Agenda & Welcome

- Purpose and activation criteria
- Who is on the team?
- Situational Awareness
 - Forms
 - Calls
 - Reports
- VEOCI – Collaboration Tool
- Q&A

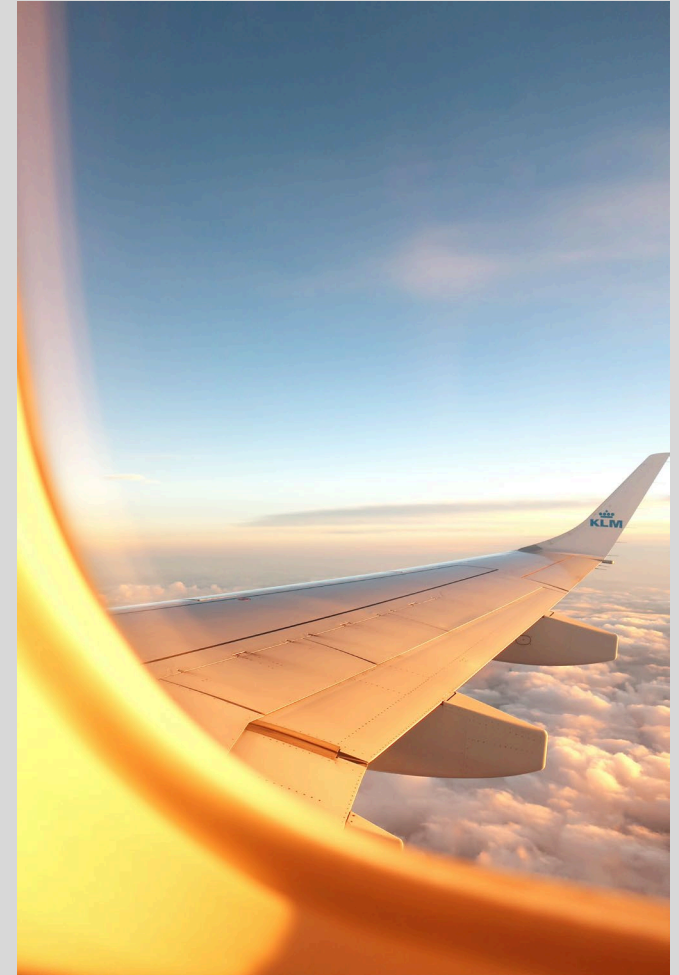


History & Creation

- Prior to 2020 Chancellor's Office Emergency Management was separate from Systemwide Emergency Management
- CSU worked with Witt O'Brien's on planning & preparedness
- CO EOC was created primarily to manage local incidents (eg power outages, protests, earthquake) impacting 401 Golden Shore)
- Director of Systemwide Emergency Management & Continuity position filled in June 2020
- August 2020 Wildfires – impacted 7 campuses
- Systemwide Emergency Support Team formalized in 2021

Why Emergency “Support Team”?

- EOC of EOC's
- 30,000 foot perspective
- Not operational in nature
- Primarily information gathering and synthesizing
- Support, **not** Manage / Direct Operations



Mission

The mission of the Systemwide Emergency Support Team is to provide systemwide situational awareness to both internal and external partners and to coordinate CSU resources in support of impacted campuses.

The Team will **NOT** direct or manage response to the incident as Emergency Management authority rests with each Campus President.

NOT the same as Chancellor's Office EOC team.

CSU & SEMS

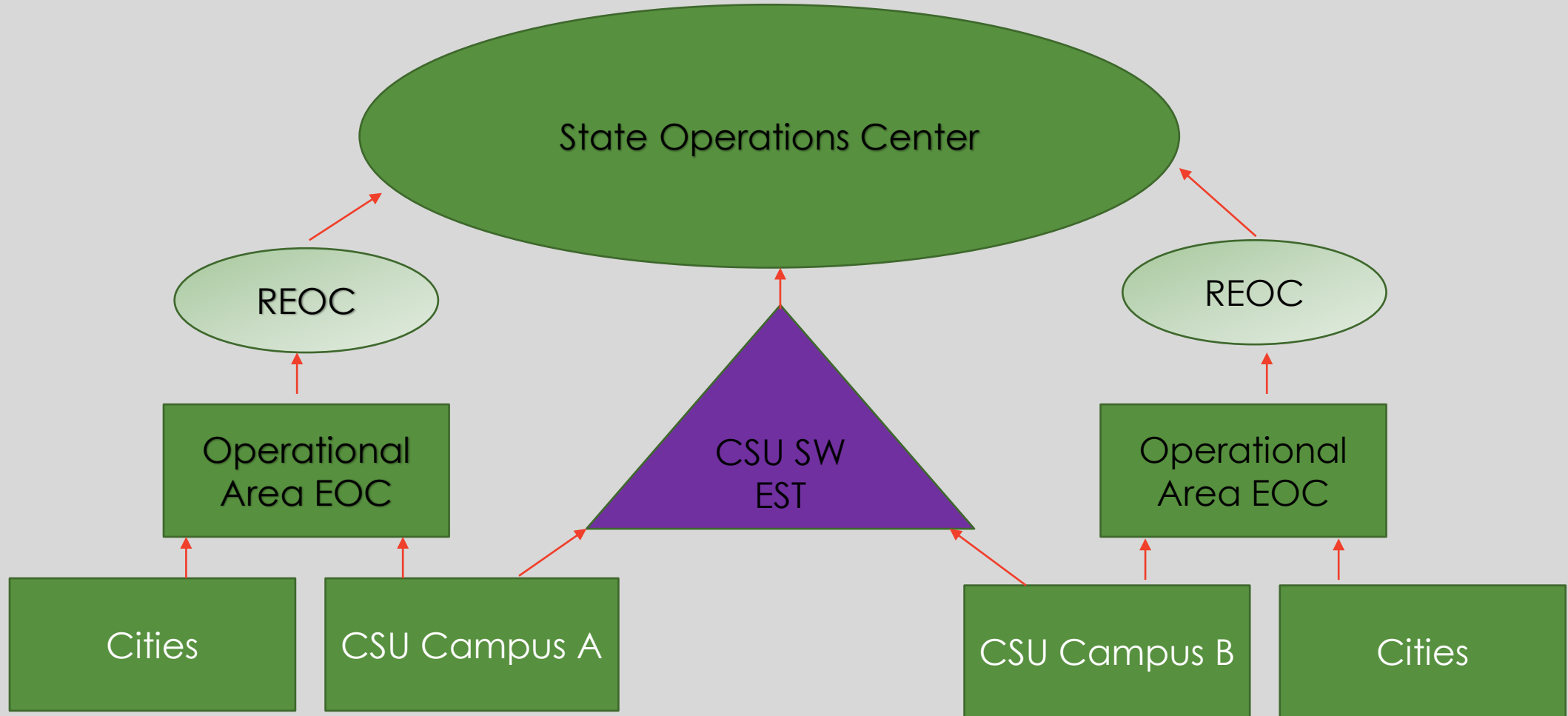
- Campuses are viewed as Special Districts within Operational Areas
- CSU CO coordinates with CalOES Headquarters during 'blue skies'
- Campus EOC works closely with city and county EOC's when activated.
- SW Emergency Support Team works directly with the State Operations Center when activated.

The 5 Levels of SEMS



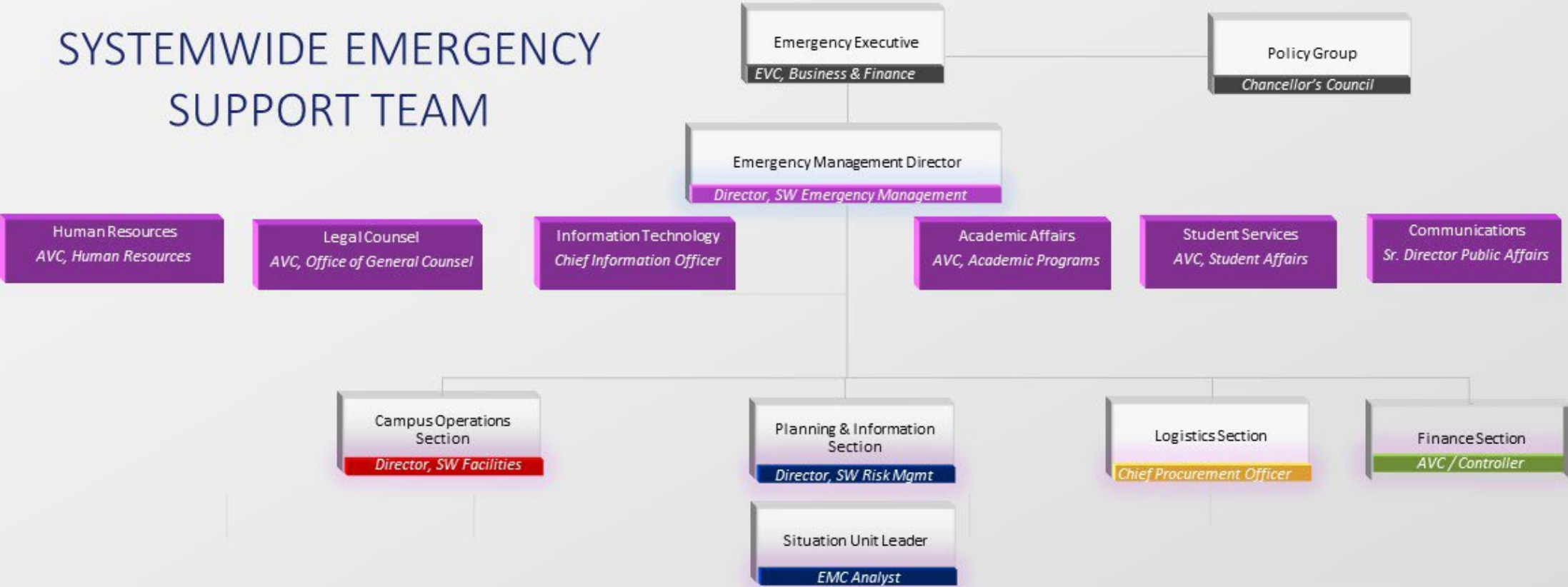
"All disasters start and end at the local level"

CSU & SEMS



Core Team Functional Areas

SYSTEMWIDE EMERGENCY SUPPORT TEAM



Who is currently appointed?

- Emergency Executive: Steve Relyea
- Emergency Management Director: Jenny Novak (Scott Bourdon)
- Human Resources: Beth Ryan (Christina Checел / Joseph Jelencic)
- Legal Counsel: Dawn Theodora
- Information Technology: Ed Clark (Peter Mosinskis)
- Academic Affairs: Dr. Laura Mossa (Brent Foster)
- Student Affairs: Dilcie Perez (Ray Murillo)
- Communications: Mike Uhlenkamp (Hazel Kelley)
- Campus Operations Section Chief: Shawn Holland (Elvyra San Juan)
- Logistics Section Chief: David Beaver (Ivonne Romo)
- Planning Section Chief: Jody Van Leuven (Stephanie Kim)
- Finance Section Chief: Tracey Richardson (Sherry Pickering)

Incident Specific Functions

Environmental Health & Safety

Energy / Sustainability

Building Official

Fire Safety

Security

Procurement

Campus Mutual Aid

VEOCI Support

Documentation

Labor Relations

Risk Management

Information Security

Data Center

IT Support Services

Information Systems

Research

Student Health

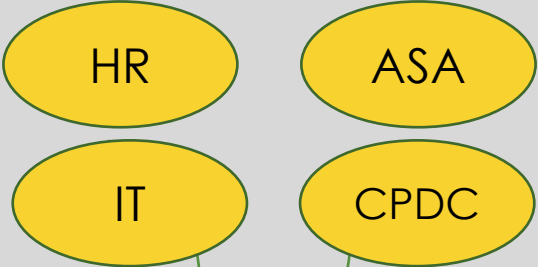
Student Activities

External Relations

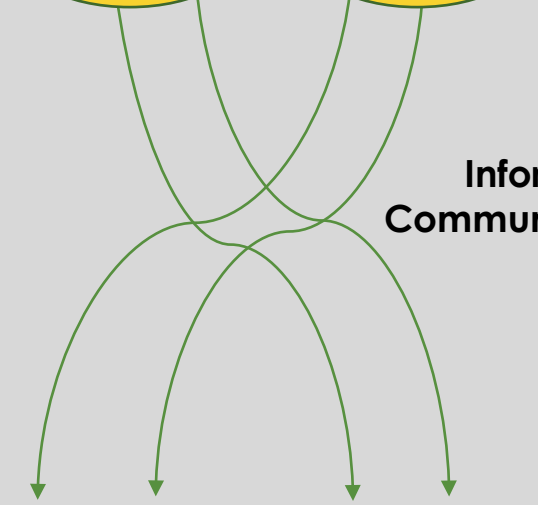
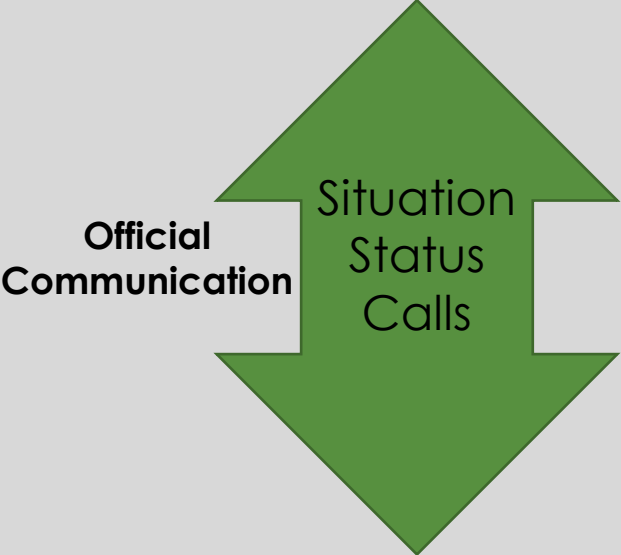
Systemwide Emergency Support Team
(Chancellors Office)



Chancellor's Office Functions



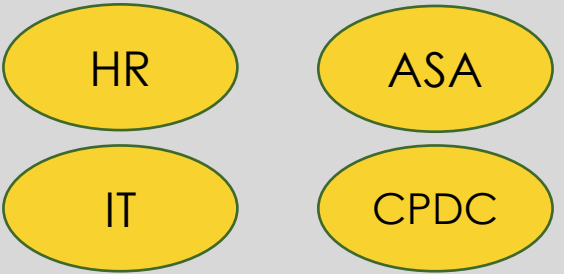
CSU Incident Communications Pathways



Campus Emergency Operations Centers



Functional Campus Counterparts



Activation Process

Any Core Team member may activate the team when they become aware of an incident that impacts multiple CSU campuses.

Emergency Executive will be notified.

Emergency Management Director will call a meeting of the Core Team.

Monitoring Status: A VEOCI room will be activated for information sharing

Standing Objectives

1. Provide resource, coordination, and information support to CSU campuses impacted by the incident.
2. Utilize the Virtual EOC (VEOCI) platform to build a common operating picture and maintain situational awareness of our statewide impacts.
3. Provide communications and updates to our campus community and internal stakeholders.
4. Support the damage assessment process for structures lost and equipment damaged by the incident.
5. Coordinate with state and local emergency management partners.

Standing Schedule (incident dependent)

SW Emergency Support Team Operations Schedule	
9:00 AM	Core Team Conference Call
	Development of Incident Action Plan
1:00 PM	Situation Status Call with Campuses
	Development of Situation Report
As Needed	Planning Section Meeting
5:00 PM	Situation Report Published

Campus Interaction

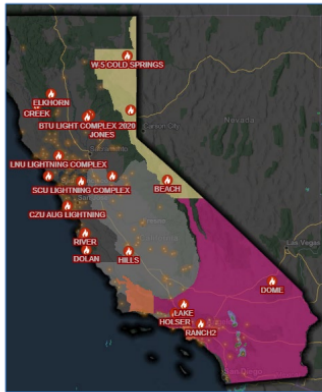
How do I interact with the Systemwide Emergency Support Team?

August 2020 Systemwide Campus Fire and Smoke Impacts

CSU The California State University Situation Report 01: Executive Summary

At least 18 wildfires are burning statewide and seven California State University campuses are experiencing significant impacts. San Jose, Sacramento, Stanislaus, and East Bay campuses have closed due to poor air quality. Structures at the Cal Poly San Luis Obispo Satellite campus in Santa Cruz County have been lost due to the CZU Lightning Complex Fire and campus personnel are evacuated. Sonoma State University is preparing to operate a community shelter in residential housing at the request of Sonoma OES and CalOES for evacuees of the LNU Lightning Complex fire. CSU Monterey Bay is staging CalFIRE equipment, providing firefighter housing, and assisting local police with conducting evacuations in its surrounding communities. Extreme heat and wildfire conditions will continue to impact the state through Friday, August 21st with adverse conditions persisting into next week in some areas.

On Tuesday, August 18th Governor Newsom declared a statewide emergency due to fires and extreme weather conditions. As of August 19th, the State Operations Center was activated in support of the statewide fires.



Statewide wildfires as of 8/20/20 3:30PM (source: CalOES)

When an incident occurs, the campuses will be asked for impact information to feed systemwide situational awareness via the following channels:

- Campus Status Form (feeds VEOCI dashboard)
- Situation Status Calls

Information is consolidated into:

- VEOCI campus status dashboard
- CSU Situation Report

Campus EOC staff can also view the campus status dashboard at anytime during an incident to gain an understanding of systemwide impacts

Resource requests can be made to the Systemwide Emergency Support Team

- First CSU Logistics Section Summit on 3/6/23
- Meetings will be held quarterly

Situation Status Call

Purpose

- Campuses share information with the Chancellor's Office and each other. Establishes statewide / systemwide situational awareness

Facilitated By

- Situation Status Unit Leader (Stephanie Kim)

Participants

- Campus EOC Representatives
- SW EST Planning Section
- Emergency Management Director
- Other SW EST members as appropriate

Structure

- Roundtable of impacted campuses. Each campus provides a brief update on the situation in their area, campus impacts, and planned actions in the next 24 hours.

Outcome

- The information provided during the call will be used in the daily Situation Report.

Situation Report

Contains the following sections:

- Situation Summary
 - Key campus impacts
 - Incident impacts
 - Any declared emergencies
- Incident Maps (i.e. wildfires and air quality)
- Campus Status Reports



Audience is any CSU stakeholder.
Report focuses on CSU impacts



Shared with Emergency Executive
and Policy Group



May be shared with the Board of
Trustees, CalOES, Legislative Partners



Posted in main VEOCI collaboration
room



Shared via email lists as well

Campus Status Form

Requests the following information:

- Campus Status (i.e. closure)
- EOC Status
 - Activation type (i.e. in-person, hybrid, etc.)
- Incident Management Team Activated?
- Housing Status
- Instruction Status
- Campus Community Impacts (i.e. fatalities, displacements, etc.)
- Support needed from CO
- Applicable Disaster Declarations
- Campus-specific Incident Webpage

University Status Update

For assistance with this page:
✉ skim@calstate.edu

^ Campus **REQUIRED**

Campus

-- Select Value --

Campus Status REQUIRED

- Normal Operations / Fully open
- Partial closure (describe below)
- Closed – essential operations only (Police, facilities, housing) (describe below)
- Full closure / evacuated (describe below)
- Campus on lockdown / shelter-in-place (describe below)

EOC Status REQUIRED

- Activated – Highest level
- Activated – Middle level
- Activated – Lowest Level / Monitoring
- Not activated

Campus Status Dashboard

Campus Status

[Home](#) / [CSU Chancellor's Office](#) / [Systemwide Emergency Support Tea...](#) / [\(This Is A DRILL\) SW EST Overvie...](#) / [\(This Is A DRILL\) CSU Systemwide...](#)

🔍 🗨️ 🔔 SK

Side Rooms New Edit Tools View

CSU Status Overview

Campus University Status Filter Grid Data ⓘ

Campus	Campus Status	EOC Status	Description
Chancellor's Office 1			
Chancellor's Office	Normal Operations / Fully open	Activated - Lowest Level / Mo...	
Dominguez Hills 1			
Dominguez Hills	Normal Operations / Fully open	Not activated	
Fresno 1			
Fresno	Normal Operations / Fully open	Not activated	
San Francisco 1			
San Francisco	Closed - essential operations ...	Activated - Middle level	test

University Statuses

Universities Seeking Support 1

Campus Fatalities 6

Links

[University Status Update](#)

[Report Disaster Declaration](#)

[Fire Map](#)

Campus Incidents Websites 📘

Link:

calstate.edu

Campus Impacts 📘

6

Current Campus Statuses 📘

Closed - essential operations only (Police, facili...	1
Full closure / evacuated (describe below)	1
Normal Operations / Fully open	3

Disaster Declarations Filter Grid Data ⓘ

Designated Incident Name ↑	Level of Declaration	FEMA Disaster Number	Appli
No Form Entries			

Activated Emergency Support Team

No Entry to Show

Create an Entry

March 10, 2023 – Monitoring Activation

- Statewide atmospheric river forecast
- Warm storm following series of cold storms and snow – potential for flooding
- Governor's State of Emergency in 34 counties
- State Operations Center activated to Level 1 (highest Level)
- VEOCI room activated
 - SWEST members invited
 - CSU Emergency Managers invited
- Campus Status Request – AM & PM
- Dashboard shared with Chancellor's Council

Chino Hills Shaker Exercise

- Conducted in June 2022
- Primarily in person, functional exercise designed by CSU emergency managers
- Focus on damage assessment in an earthquake scenario
- Improvement Planning & Corrective Actions taking place through 2023
- Another exercise is planned for June 1, 2023 with focus on mass care during atmospheric river scenario impacting Northern California campuses. Sonoma & SFSU will play and SW EST participation will be virtual.
- Objective on mutual aid and resource request process



QUESTIONS?