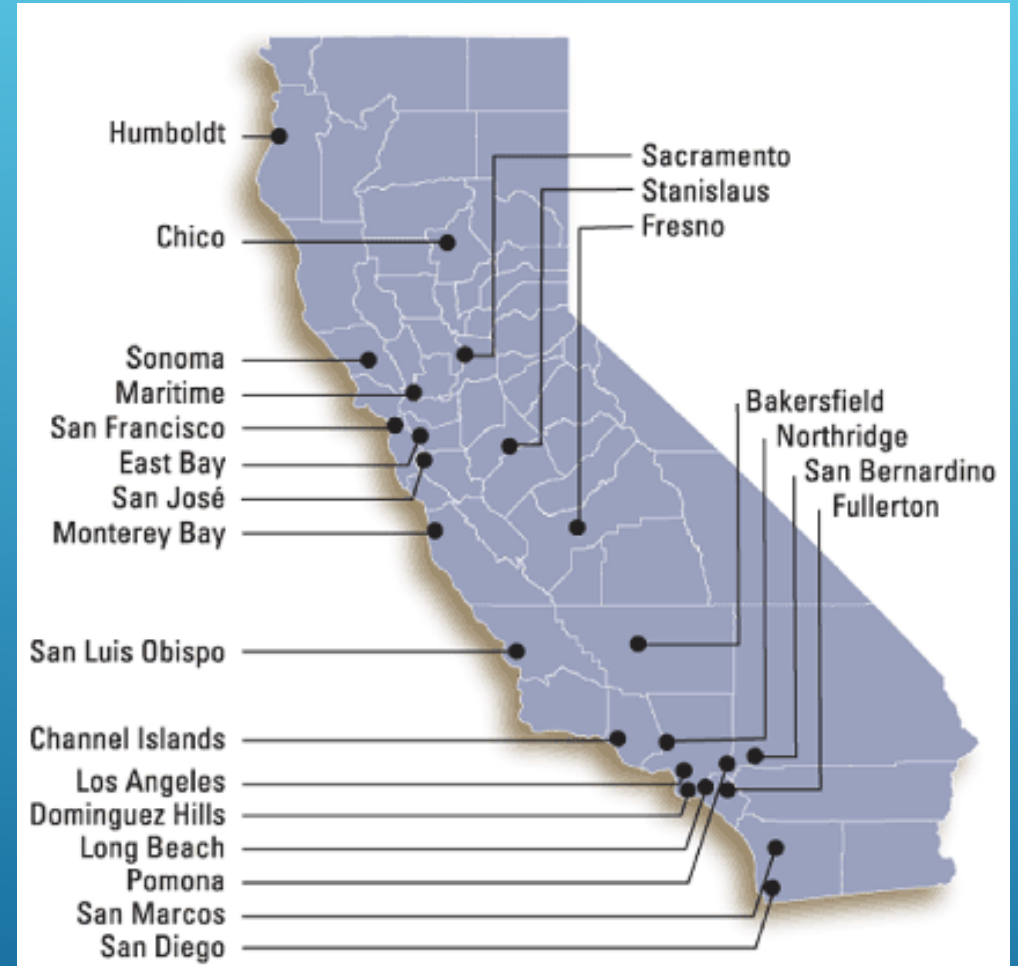


AFFINITY GROUPS AND MULTI-CAMPUS CONSORTIUMS

BOYKIN WITHERSPOON III
EXECUTIVE DIRECTOR, WRPI

- 23 Campuses
- 430,000 Students
- 45,000 Faculty



WRPI PROGRAMS:

120 PAID STUDENT INTERNS PER YEAR

FACULTY RESEARCH INCENTIVE PROGRAM
GENERATES APPROXIMATELY \$2 MILLION PER
YEAR

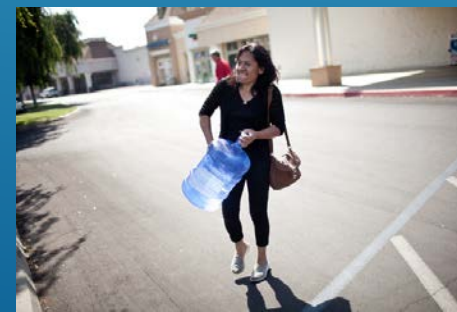
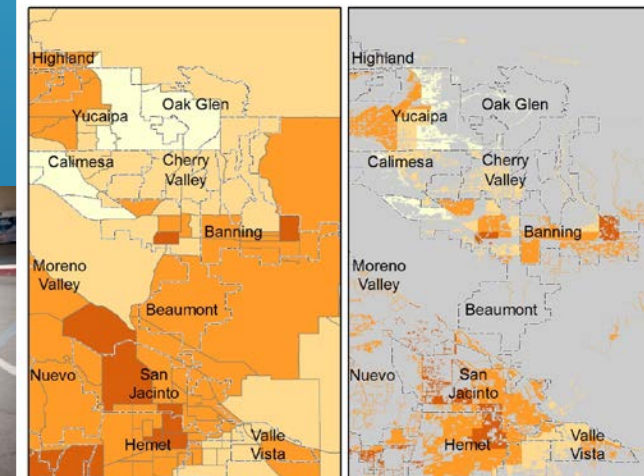
\$7,500,000 AWARDED TO WRPI FROM
EXTERNAL GRANTS 2014-2018

CSU CONSORTIUM BUILDING

INDUSTRY, AGENCY PARTNERSHIPS



Beaumont





SACRAMENTO STATE
Office of Water Programs



Welcome to the Office of Water Programs!

Our Mission is to provide cost-effective solutions for protecting and enhancing water resources, public health, and the environment through training, scientific research, and public education.

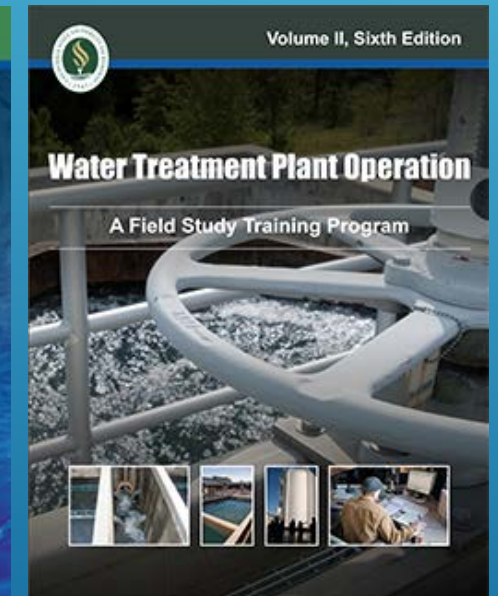
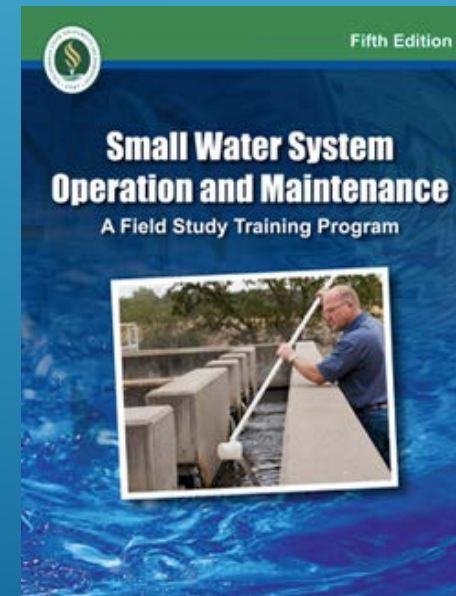


Ramzi Mahmood
Director, Office of Water
Programs

23 TECHNICAL AND CERTIFICATE
TRAINING COARSES

WATER QUAITY TESTING

CALTRANS AND NATION-WIDE DOT
STORMWATER MANAGEMENT
CERTIFICATION



Center for Irrigation Technology
Celebrating 35 years!



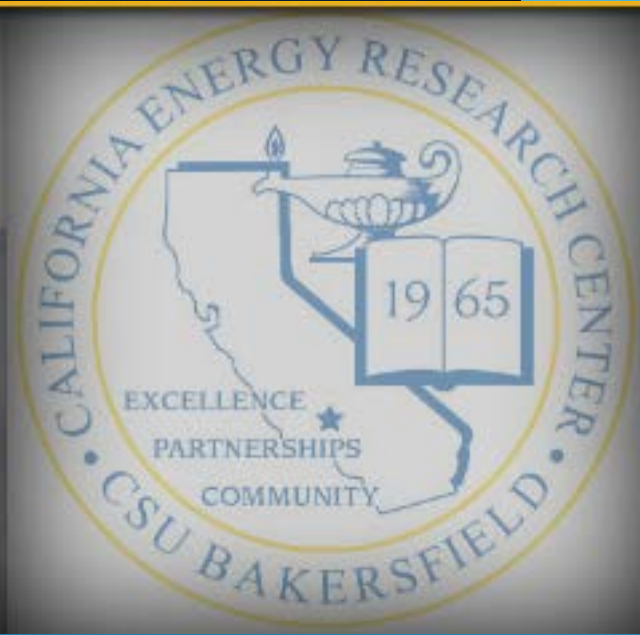
- functions as an independent testing laboratory, applied research facility, and educational resource to both public and private sectors.
- is dedicated to advancing irrigation technology, water/energy management practices, and equipment standards.

- The International Center for Water Technology was established to provide education and research to assist in developing and adopting innovative solutions and technologies that improve water use efficiency.

- To carry out concise, comprehensive studies that will provide the direction for better future uses and conservation of the State's waters.



David Zoldoske,
Ph.D - Director



California Energy Research Center (CSUB CERC).

We engage in collaborative research efforts focusing on maximizing the efficient development of a host of energy resources available in our service region. Our expertise and experience cover a wide range of topics including:



Energy Efficiency in Agriculture



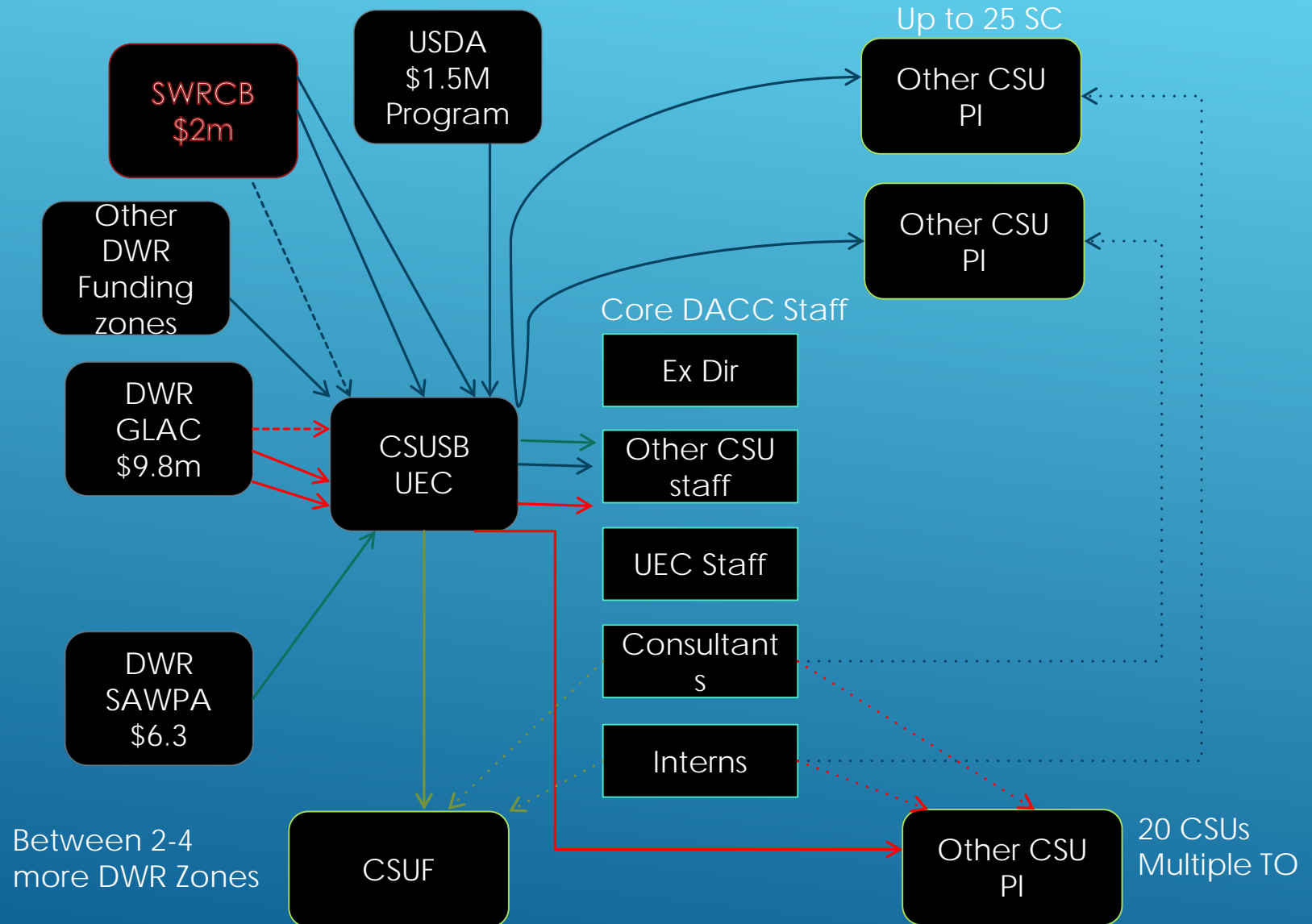
Petroleum Engineering



Alan Fuchs
Director

- Farm equipment design and testing
- Wireless harvesting systems
- Drone studies
- Photosynthesis efficiency
- Biofuels

- Reservoir modeling (hydrocarbons, steam, CO₂)
- Shale fracture studies
- Laboratory-based feasibility studies
- Treatment of produced water in oil field operations
- Evaluation of guar gum and bio-polymers in hydrofracturing fluids



SO, WHERE IS THE RISK?

ITS NOT THE TALENT
ITS NOT THE CAPACITY

THE RISK IS WITH THE INSTITUTIONS THEMSELVES

\$100,000 direct grant to CSUSB UEC
25% IDC = \$25,000
\$125,000 total grant amount

\$50,000 direct sub contract to Chico

\$50,000 direct CSUSB UEC
25% IDC = \$12,500
\$62,500 total CSUSB UEC

CSUSB UEC takes 25% IDC of the first
\$25,000 of the sub award amount =
\$6,250

*This scenario puts
us \$6,250 in the red*

\$6,250 more to CSUSB UEC
for a total of
\$68,750 with \$18,750
being indirect fees.

\$50,000 direct CSU Chico
25% IDC = \$12,500
\$62,500 total CSU Chico sub award

Chico IDC of \$12,500 minus the
\$6,250 charge = \$6,250 for Chico
which means their sub contract
total is **\$56,250 not \$62,500**

*So we have
to do this*

SUB AWARD TERMS AND CONDITIONS

RISK ASSESSMENT PROCEDURES AND FORMS

23 DIFFERENT TEMPLATES AND PROCEDURES

WORKFLOW AND PRIORITY ISSUES (WHAT DO FOUNDATIONS DO?)

STANDARDIZE TEMPLATES AND WORKFLOWS

THANK YOU

BOYKIN WITHERSPOON III

BWITHERS@CSUSB.EDU