

WRPI Annual Conference

“Changing the Path of Waterways: The Unforeseen Consequences”

HISTORIC STEPS TO REVITALIZE THE SALTON SEA



Salton Sea Authority



Historic progress at the Sea

- Breakthroughs in cooperation
- Governance clarified
- Policy enhanced
- Funding expansion
- Local Consensus
- State Commitment
- Tangible Plans and Projects



Salton Sea Authority

Salton Sea Authority

- What is the SSA? Who are the members?
- When was it created, and by whom?
- Why was it created and what is its mission?



Cooperation = Funding Expansion



- Guiding Principles adopted
- Internal legal dispute settled
- MOU's
 - SSA/DOI
 - CNRA/DOI
 - US ACOE -- WRDA
- Funding expansion
 - State funding
 - Federal Funding
 - Nonprofit
 - Private



Salton Sea Authority



Improved Trust = Legislative Support

- **Funding**
 - State \$\$
 - Prop 1 = \$80.5 M
 - Prop 68 = \$200 M (Pending voter approval)
 - Federal \$\$
 - Dept of Ag = \$7.5 M
 - WRDA (Army Corps) = \$30 M
- **Construction savings**
 - Dam Safety considerations
- **Time savings**
 - Design-Build capability for Sea projects

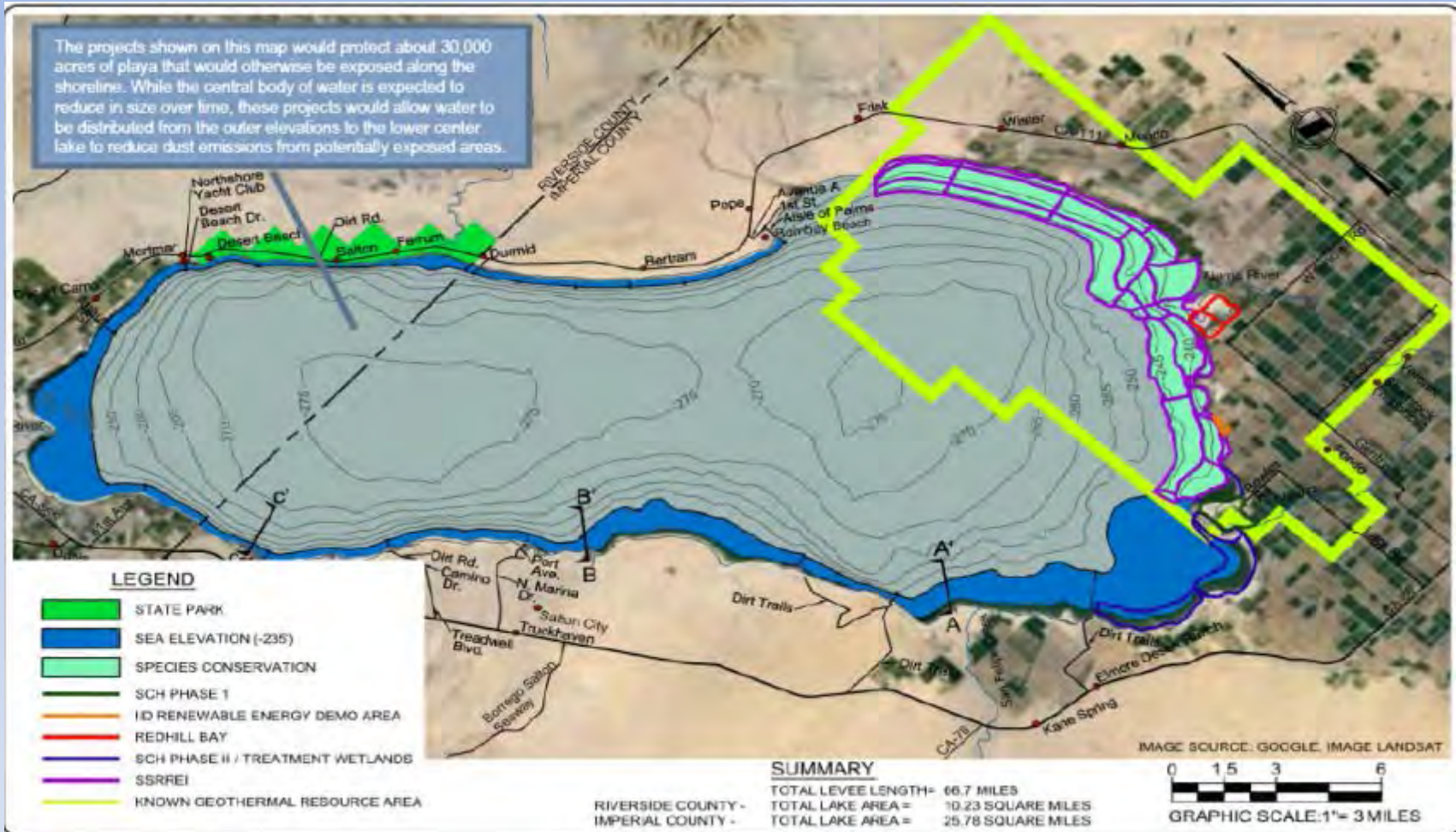


Focus on Action, not Studies

- SSA delivers “Action Plan” on time and under budget
- AB 1095 (Garcia) – defines “shovel ready”
- Salton Sea Management Program (SSMP) prioritizes “shovel ready” projects



Financial Feasibility Action Plan



Salton Sea Authority

United Plan: Salton Sea Management Program

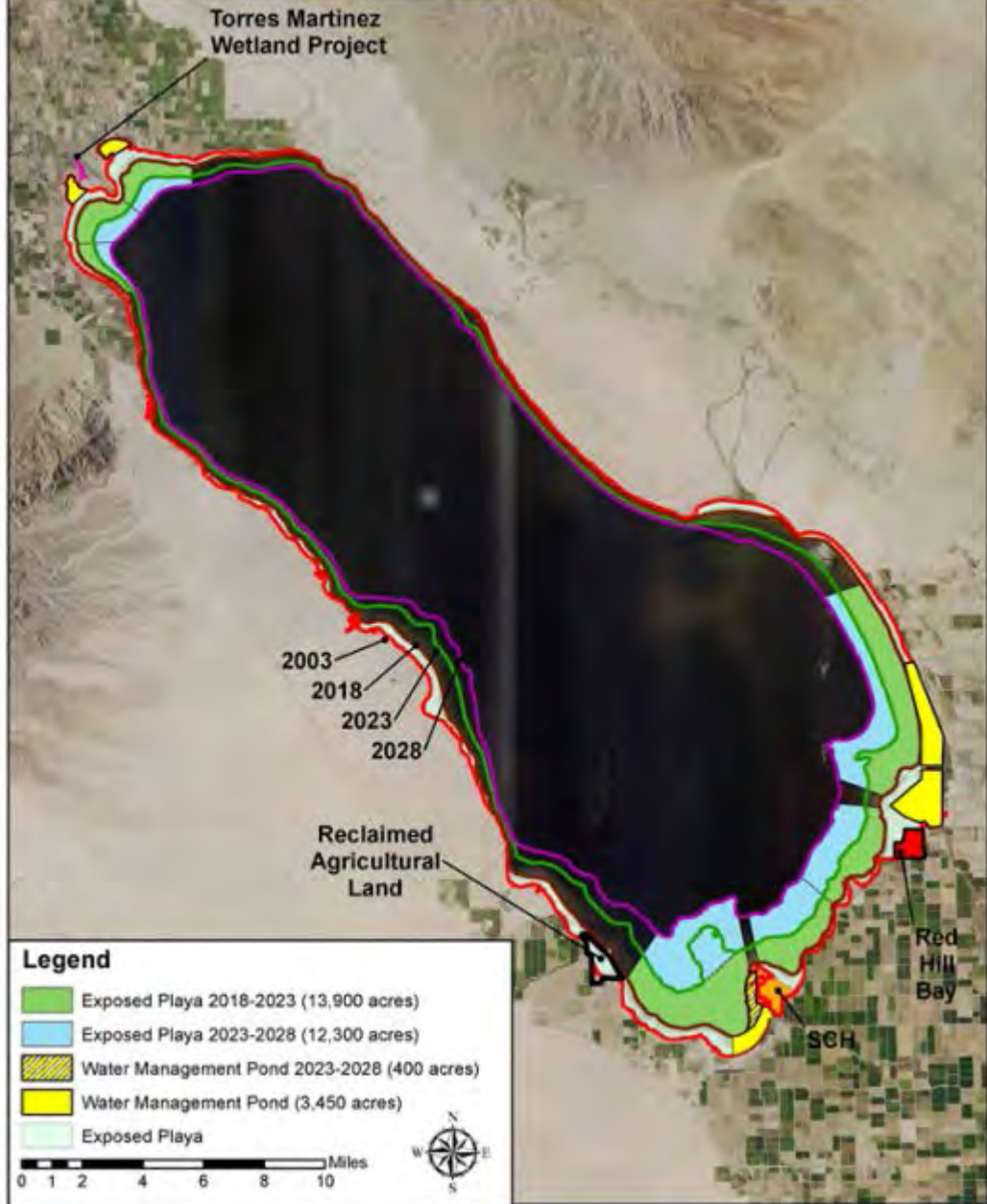
- The SSMP integrates federal, state and local partnerships as well as stakeholder and public to develop habitat and air quality projects needed for a revitalized Sea.
- SSMP Advisory committees:
 - Science Advisory Committee
 - Air Quality Committee
 - Environmental Compliance Committee
 - Community Engagement Committee
 - Long Range Planning



Salton Sea Authority



Salton Sea Management Program - Overview



Stable Shoreline = Multiple Benefits

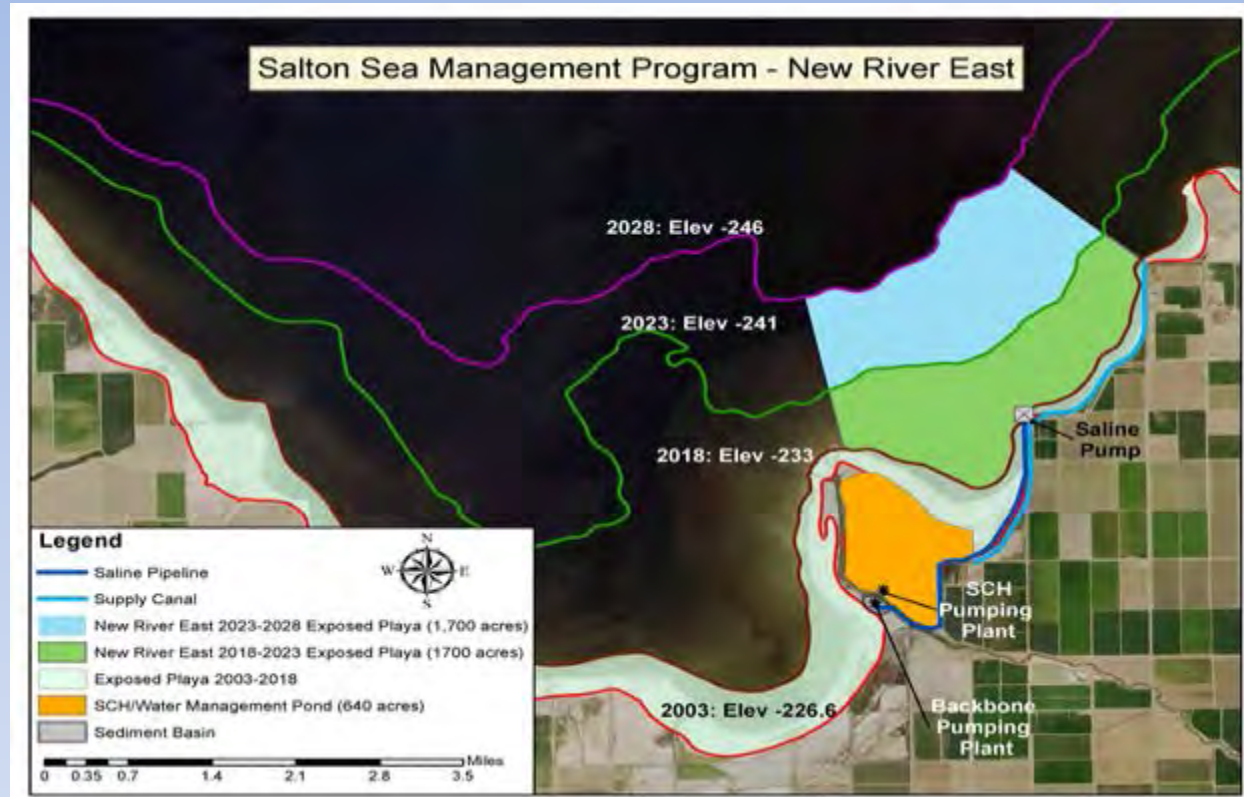
- Smaller sustainable sea
- Benefits: AQ, Habitat, Recreation, Renewable Energy
- Protects up to 30,000 acres of potentially emissive playa



Salton Sea Authority

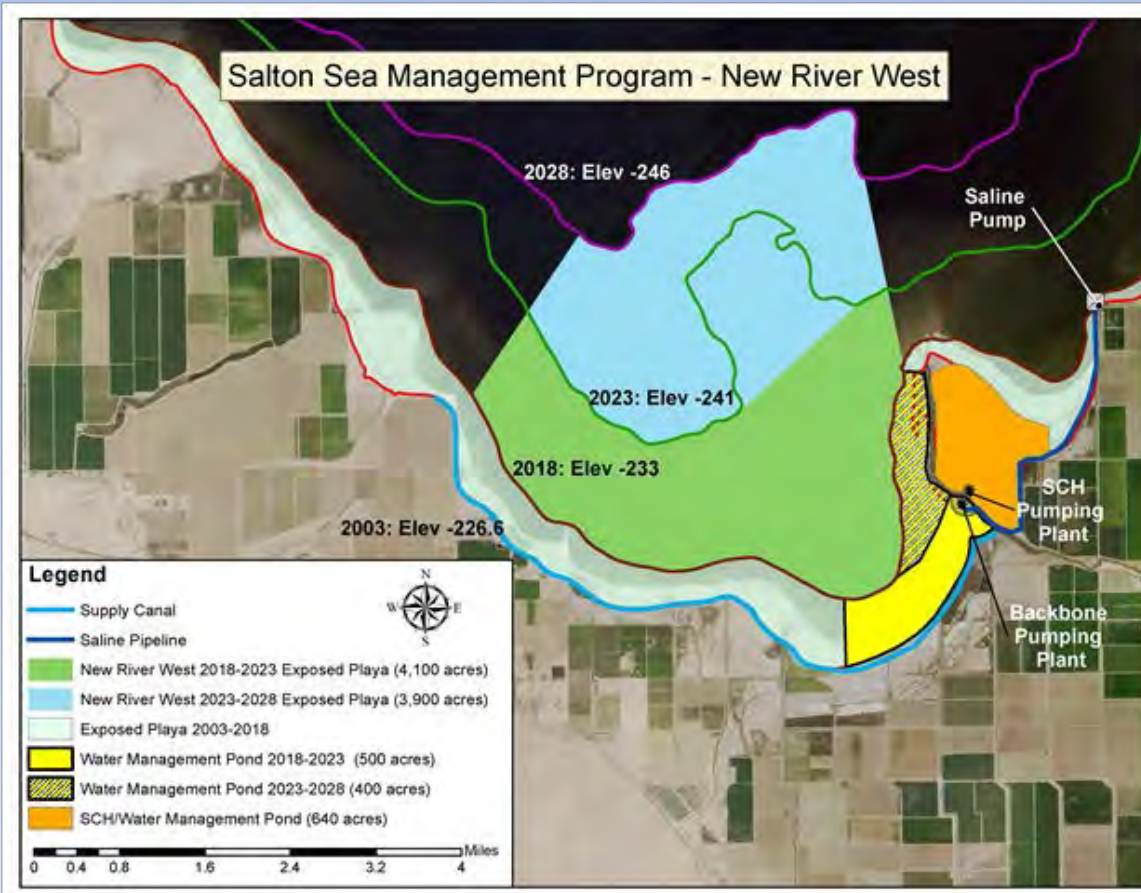
Water Delivery Backbone (Phase 1)

- Focus: “no regrets” projects
- CNRA and IID joint project
- Construction anticipated for 4th Q, 2018



Salton Sea Authority

Species Conservation Habitat (SCH Phase 1)



- Construction of berm and levee improvements to create bird habitat
- Will address salinity level problem in this area
- Construction is anticipated in Autumn of 2018

Salton Sea Authority

Alamo River: Red Hill Bay

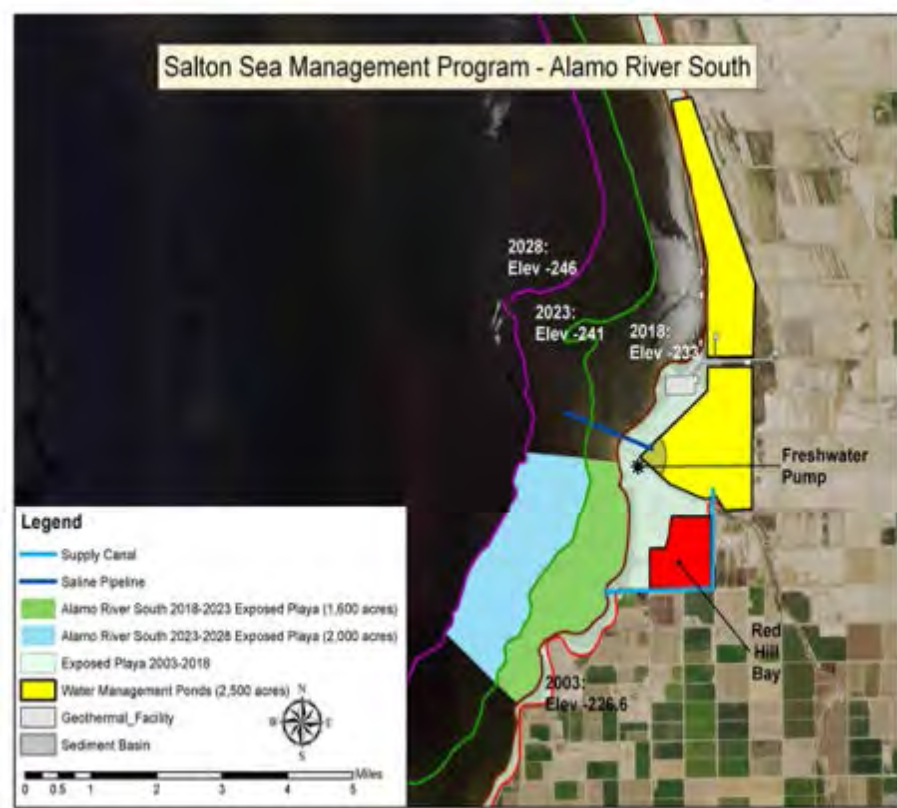
- Reestablish the Red Hill Bay Area
- A playa ground breaking ceremony was held in November 2015
- Construction underway



The Red Hill Bay Project, the first of multiple Salton Sea restoration projects to be launched, will divert enough Alamo River water to fill over 400 acres of exposed lakebed. This will create a shallow-water-habitat destination for more than 400 bird species and prevent dust emissions from the currently exposed lakebed.

Salton Sea Authority

Alamo River



Salton Sea Authority



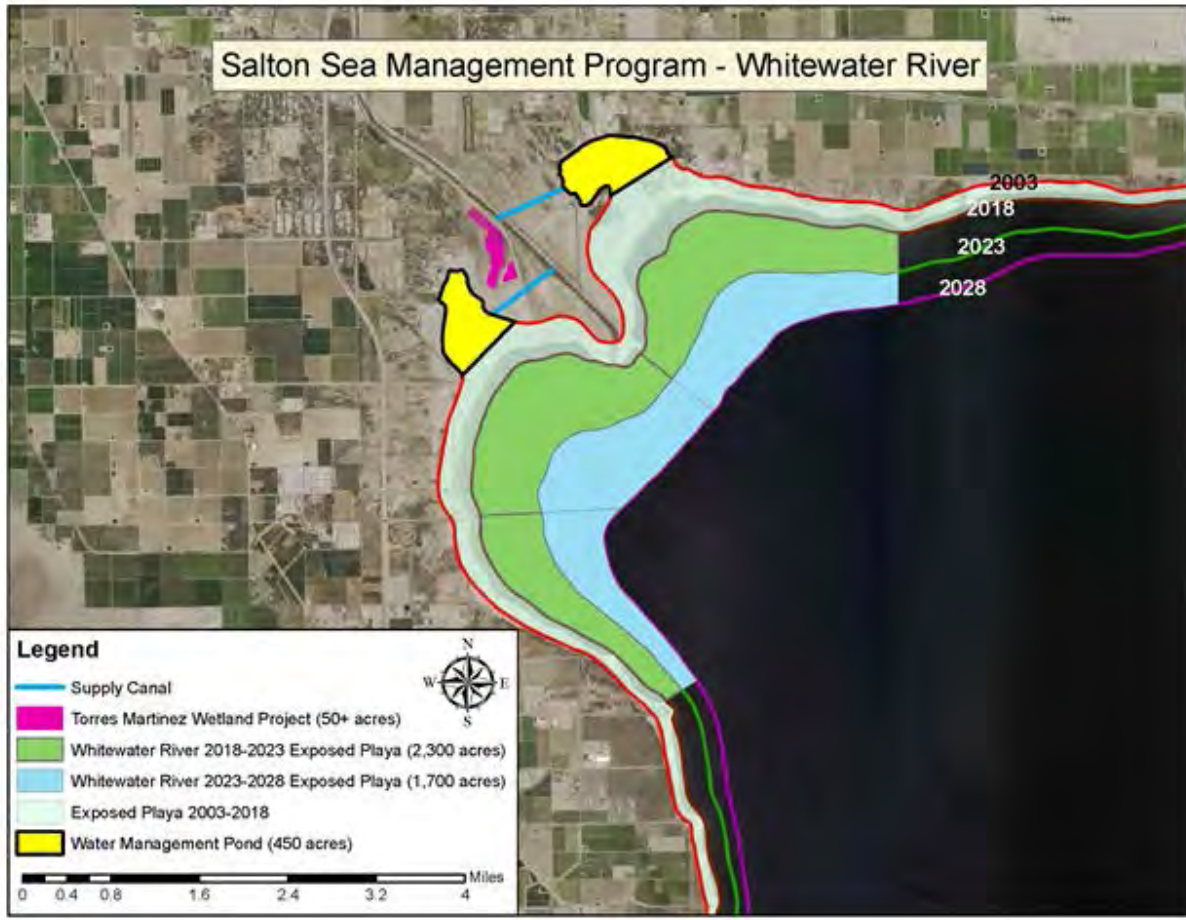
Whitewater Channel: TM Wetlands

- Benefits: Habitat, AQ
- Reconstructs ponds serving as habitat while removing invasive plants
- Construction started in 2016 (funded by state), coordinated by SSA in partnership with TM Tribe
- COMPLETED - SSA Project: FIRST state-funded project finished (Phase 1) at Salton Sea



Whitewater Channel – North Lake

Salton Sea Management Program - Whitewater River



Salton Sea Authority

Salton Sea Authority P-3 Financing Strategy



Salton Sea Authority



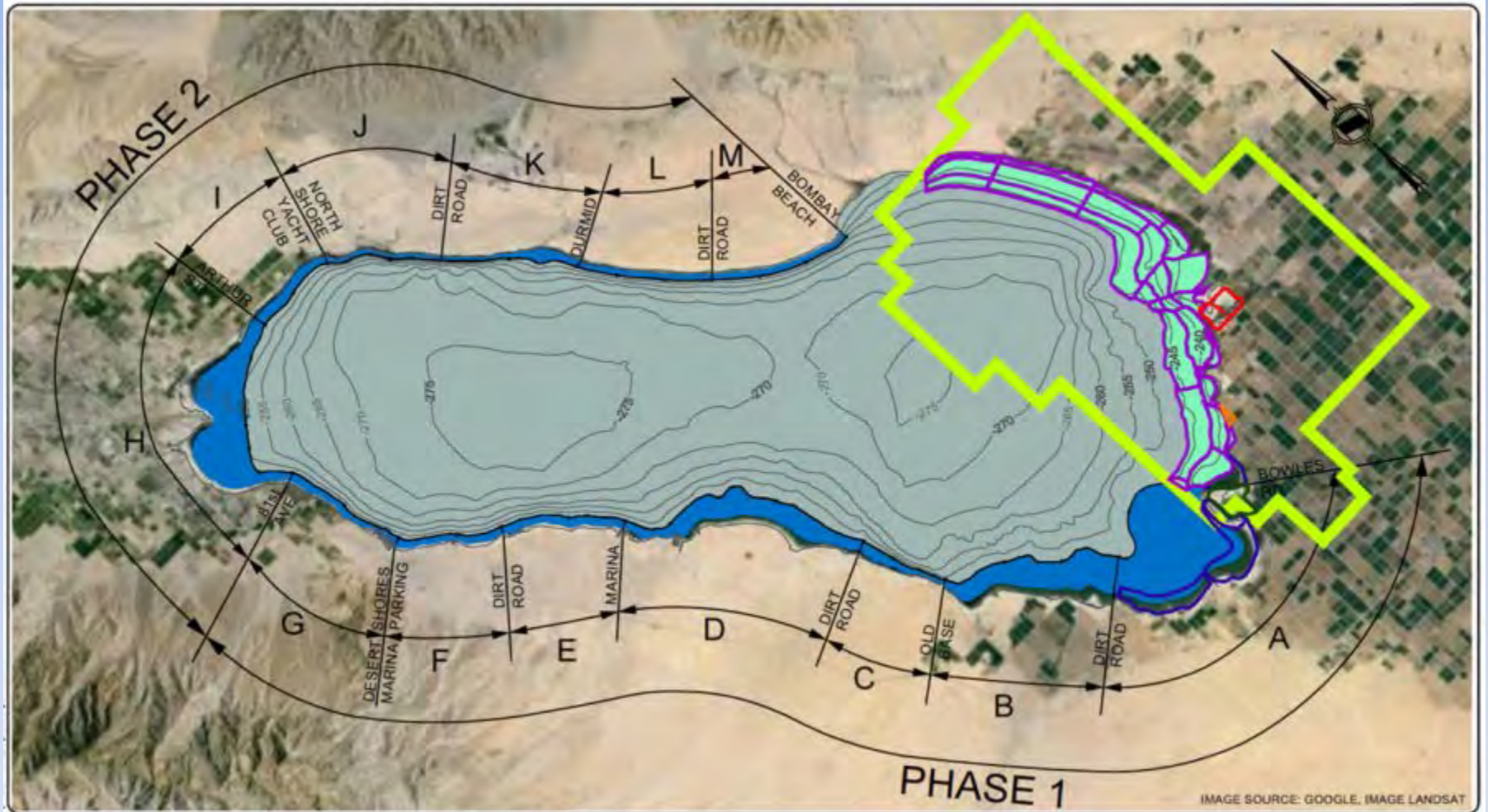
Infrastructure Financing Districts (IFDs)

- Leverages local property tax
- Feasibility analysis confirms significant financial potential
- Requires a defined project that can provide clear benefit



Salton Sea Authority

Salton Sea (IFD) map



Salton Sea Authority



What is at stake?

- Major Ecological Disaster
- Billions in liabilities to the State
- Elimination of a major Pacific Flyway Route
- Negative effects on human health and economy of the area



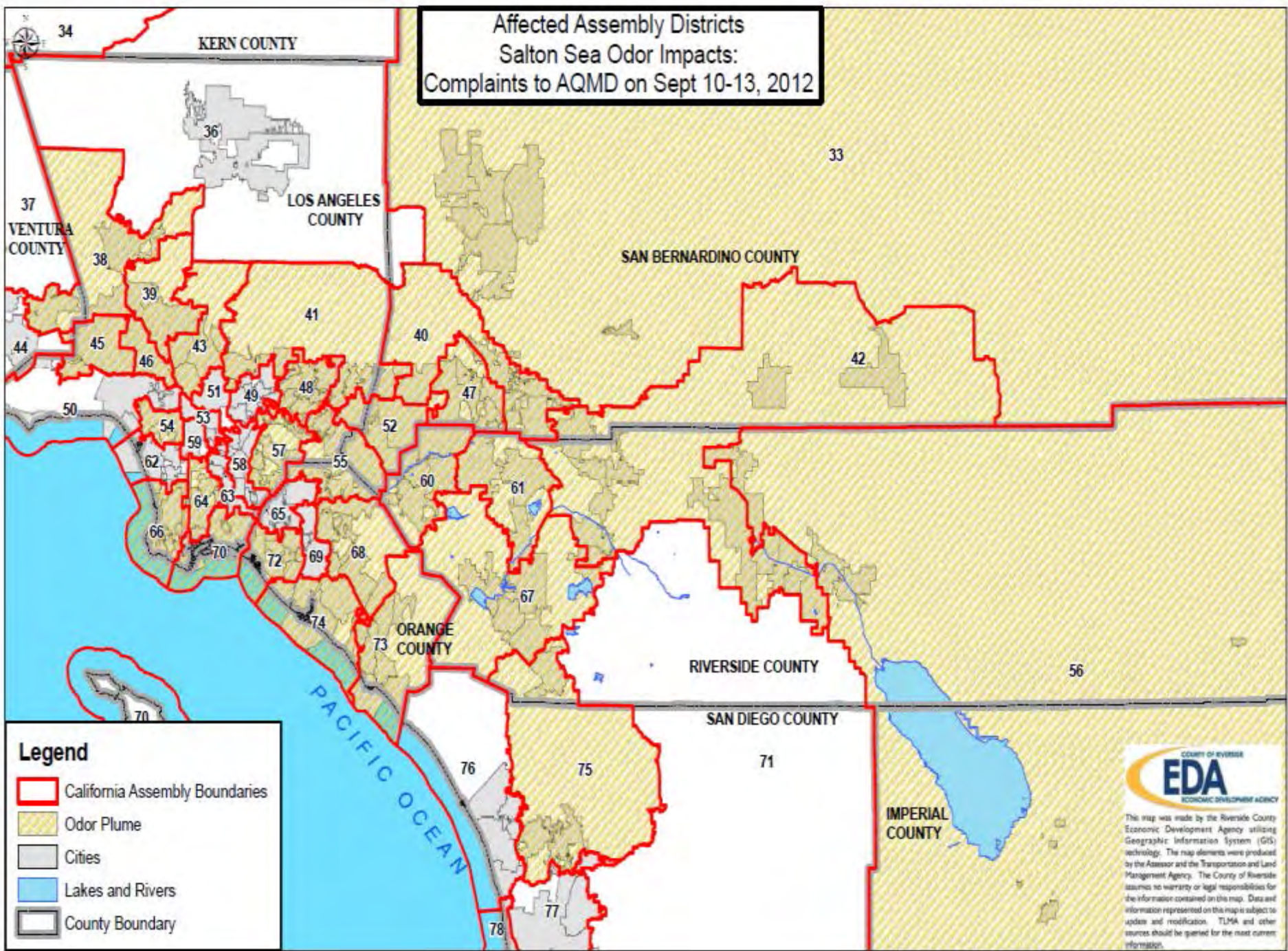
Salton Sea Authority







**Affected Assembly Districts
Salton Sea Odor Impacts:
Complaints to AQMD on Sept 10-13, 2012**



Legend

- California Assembly Boundaries
- Odor Plume
- Cities
- Lakes and Rivers
- County Boundary

COUNTY OF RIVERSIDE
EDA
ECONOMIC DEVELOPMENT AGENCY

This map was made by the Riverside County Economic Development Agency utilizing Geographic Information System (GIS) technology. The map elements were produced by the Assessor and the Transportation and Land Management Agency. The County of Riverside assumes no warranty or legal responsibilities for the information contained on this map. Data and information represented on this map is subject to updates and modification. TLMA and other sources should be queried for the most current information.



Salton Sea Authority